

WOLF BRANCH ROAD ACREAGE

12.47± acres
Lake County, FL



LOCATION

Just south of Wolf Branch Road, Lake County, FL
(unincorporated Lake County, FL)

SIZE

12.47± acres

PRICE

\$170,000.00 or \$13,632/acre

ZONING

A

FUTURE LAND USE

Regional Office – ask for Allowable Uses Sheet and information

ROAD FRONTAGE/ACCESS

No road frontage. Access through easement by way of Investor Road

UTILITIES

Well and septic required. Power approximately 300' away on Wolf Branch Road

DESCRIPTION

This property is currently cattle grazing land. The land boast elevation changes that give a natural charm to the landscape. Long term investment opportunity.

PARCEL ID

261927000100002400

Offering subject to errors, omission, prior sale or withdrawal without notice.

LAND FOR SALE

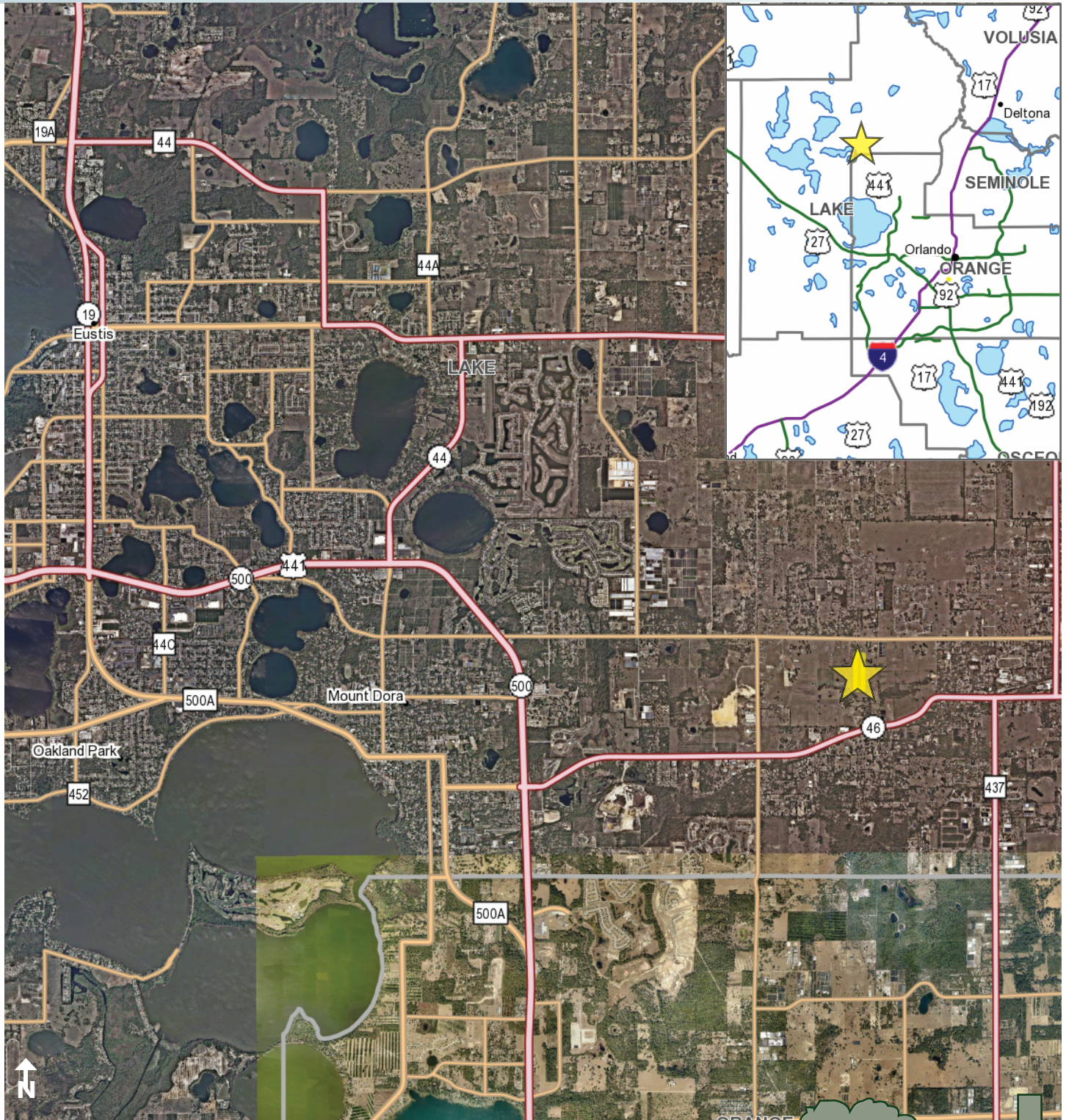
— Commercial Real Estate Investments | Management | Brokerage | Development | Land

Maury L. Carter & Associates, Inc.
407-422-3144 | www.maurycarter.com



WOLF BRANCH ROAD ACREAGE

12.47± acres
Lake County, FL



VICINITY MAP

— Commercial Real Estate Investments | Management | Brokerage | Development | Land

Maury L. Carter & Associates, Inc.
407-422-3144 | www.maurycarter.com



Maury L. Carter & Associates, Inc.SM
Licensed Real Estate Broker