

ORLANDO INT'L AIRPORT/MEDICAL CITY AREA

10.1 ± acres
Orlando, FL



ZONING

Commercial.

ROAD FRONTAGE

512' ± on Narcoossee Rd.

UTILITIES

City of Orlando.

LOCATION

South Orlando, north of Lake Nona/ Medical City and 2 miles north of Orlando International Airport which welcomed approx. 35.71 million air passengers in 2014. Located on the west side of Narcoossee Rd, just over 5 min from SR 417 and SR 528.

SIZE

10.1 ± acres

PRICE

\$1,850,000

MARKET OVERVIEW

Tremendous economic growth can be expected for this region as Lake Nona/ Medical City continues to develop and generate jobs.

- Four major medical/research facilities have been built in the last 5 years, with a VA Medical Center expected for 2015.
- 47,500 new jobs in Orlando in 2014, a 4.3% increase in employment from the previous year.
- Unemployment rate down to 5% at the end of 2014, lowest in over 6 years.
- Residential sales for Orlando 10% higher in Jan 2015 than Jan 2014.

Offering subject to errors, omission, prior sale or withdrawal without notice.

LAND FOR SALE

— Commercial Real Estate Investments | Management | Brokerage | Development | Land

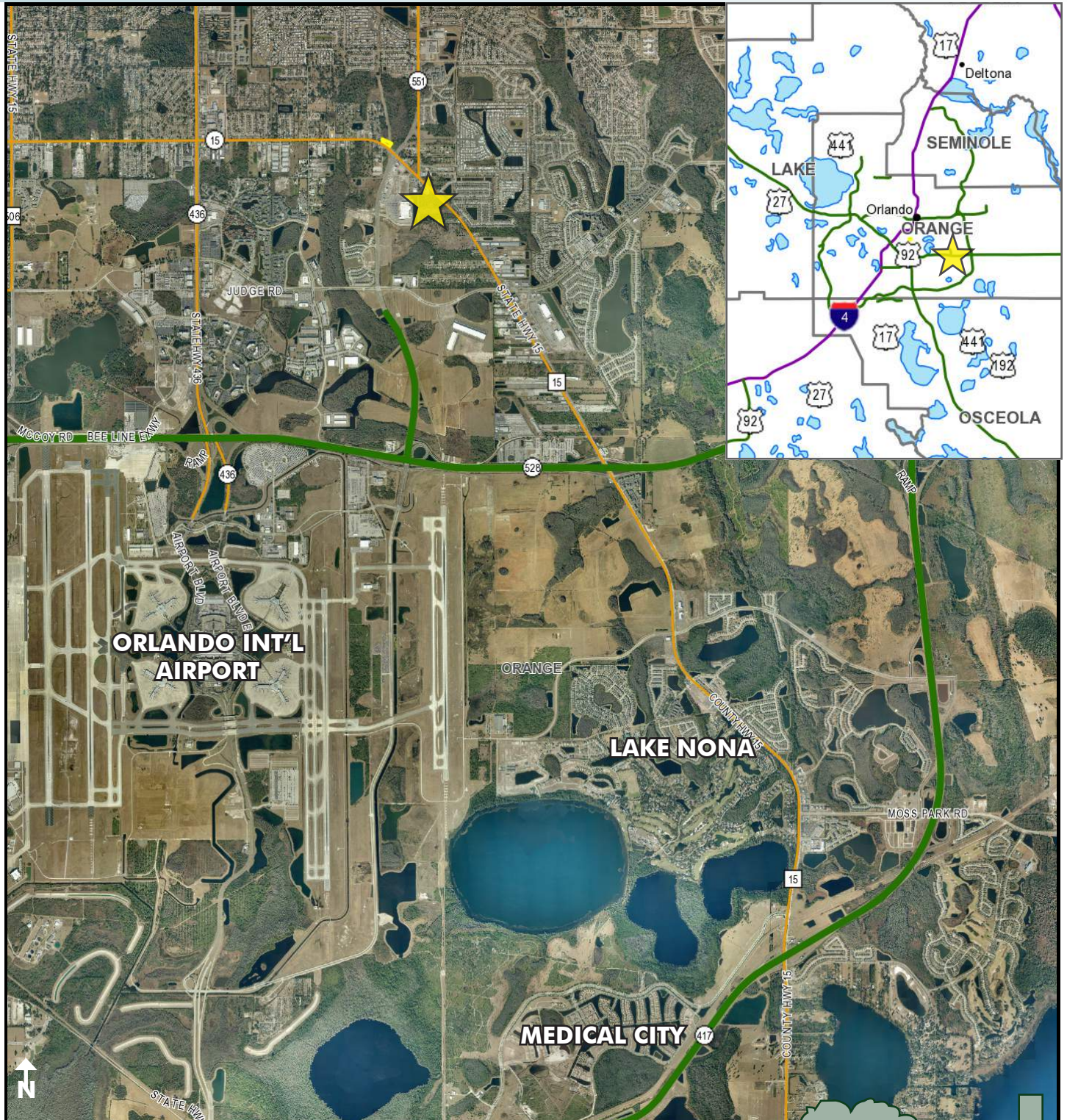
Maury L. Carter & Associates, Inc.
407-422-3144 | www.maurycarter.com



ORLANDO INT'L AIRPORT/MEDICAL CITY AREA

10.1 ± acres

Orange County, FL



PROPERTY MAP

— Commercial Real Estate Investments | Management | Brokerage | Development | Land

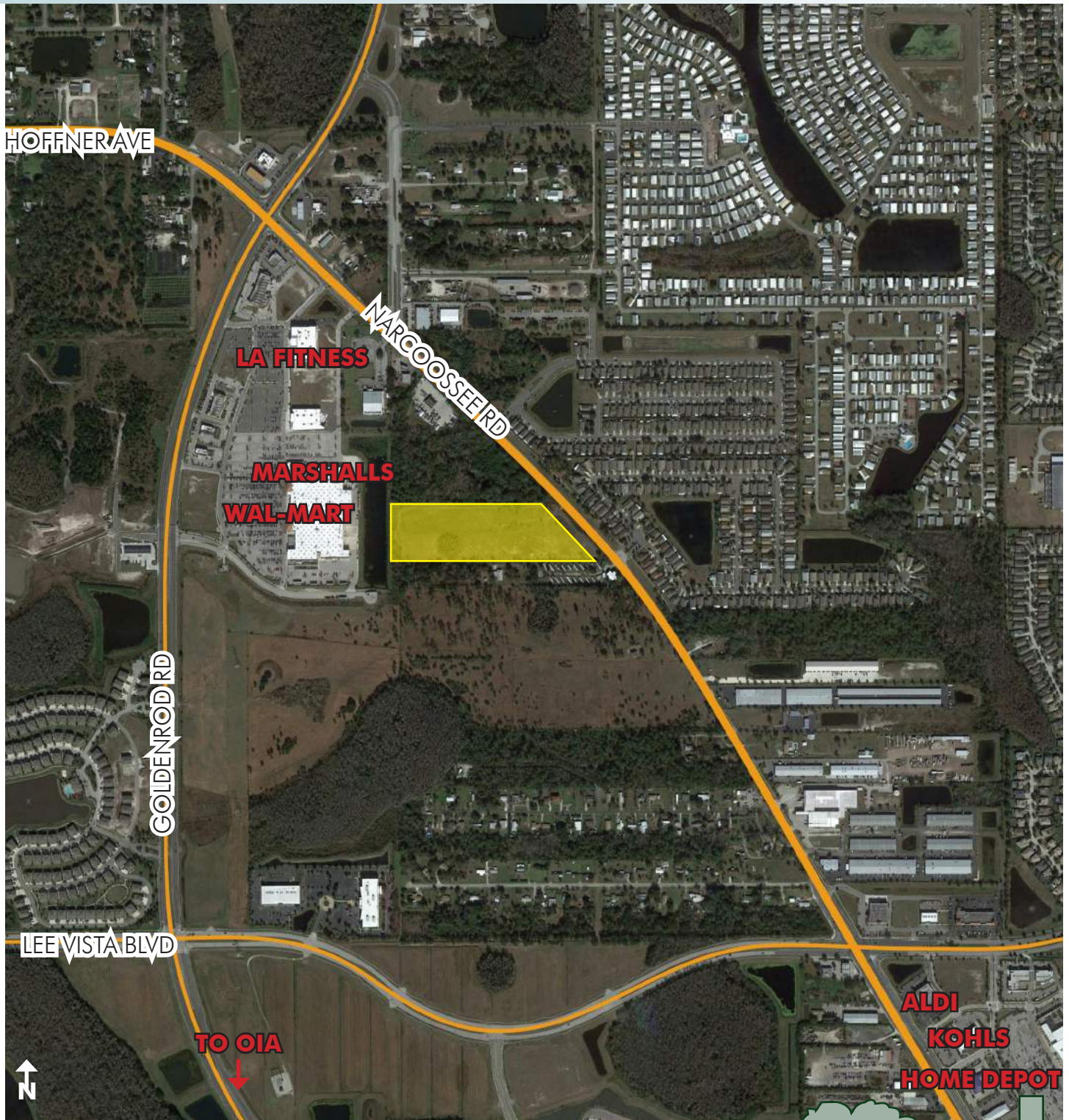
Maury L. Carter & Associates, Inc.
407-422-3144 | www.maurycarter.com



ORLANDO INT'L AIRPORT/MEDICAL CITY AREA

10.1 ± acres

Orange County, FL



LOCATION MAP

— Commercial Real Estate Investments | Management | Brokerage | Development | Land

Maury L. Carter & Associates, Inc.
407-422-3144 | www.maurycarter.com

