

PRIME DEVELOPMENT LAND CITY OF KISSIMMEE

190± acres • Osceola County, FL



LOCATION/DESCRIPTION

Mixed-use development opportunity along S John Young Parkway/US 92! Offering scenic views overlooking Lake Toho and Shingle Creek and many potential uses including: mixed-use, commercial, single-family and multi-family residential. Potential public recreational uses along the Lake Toho Marsh and the proposed extension of the Shingle Creek Regional Trail along the eastern side of the property, add to the diversity and aesthetic appeal of the site.

This site is just south of Downtown Kissimmee and the Downtown Kissimmee CRA. Redevelopment efforts have increased the desirability of the area and continue to draw visitors and add jobs to the market. Within close proximity to major roadways, Downtown Orlando, the tourist corridor, and the Lake Nona/Medical City/Orlando Int'l Airport Area.

SIZE

190± acres

PRICE

\$7,500,000

ZONING/FLU

Highway Commercial and Open Space/ Commercial General and Conservation
A land use amendment and rezoning will be required for mixed-use development.

FRONTAGE

Road: 3,383± feet along S John Young Pkwy/US 92
Water: 2,063± feet along Lake Tohopekaliga and 5,088± feet along Shingle Creek

UTILITIES

Electric: Kissimmee Utility Authority. 3 phase overhead utility poles running north and south servicing the Villas at Estancia community.

Water and Sewer: Toho Water Authority. 8" Water Main at northeast corner of property. 10" Force Main on John Young Pkwy, 11'± northwest of property line. 10" Reclaim Main on John Young Pkwy, 35'± northwest of property.

Offering subject to errors, omission, prior sale or withdrawal without notice.

LAND FOR SALE

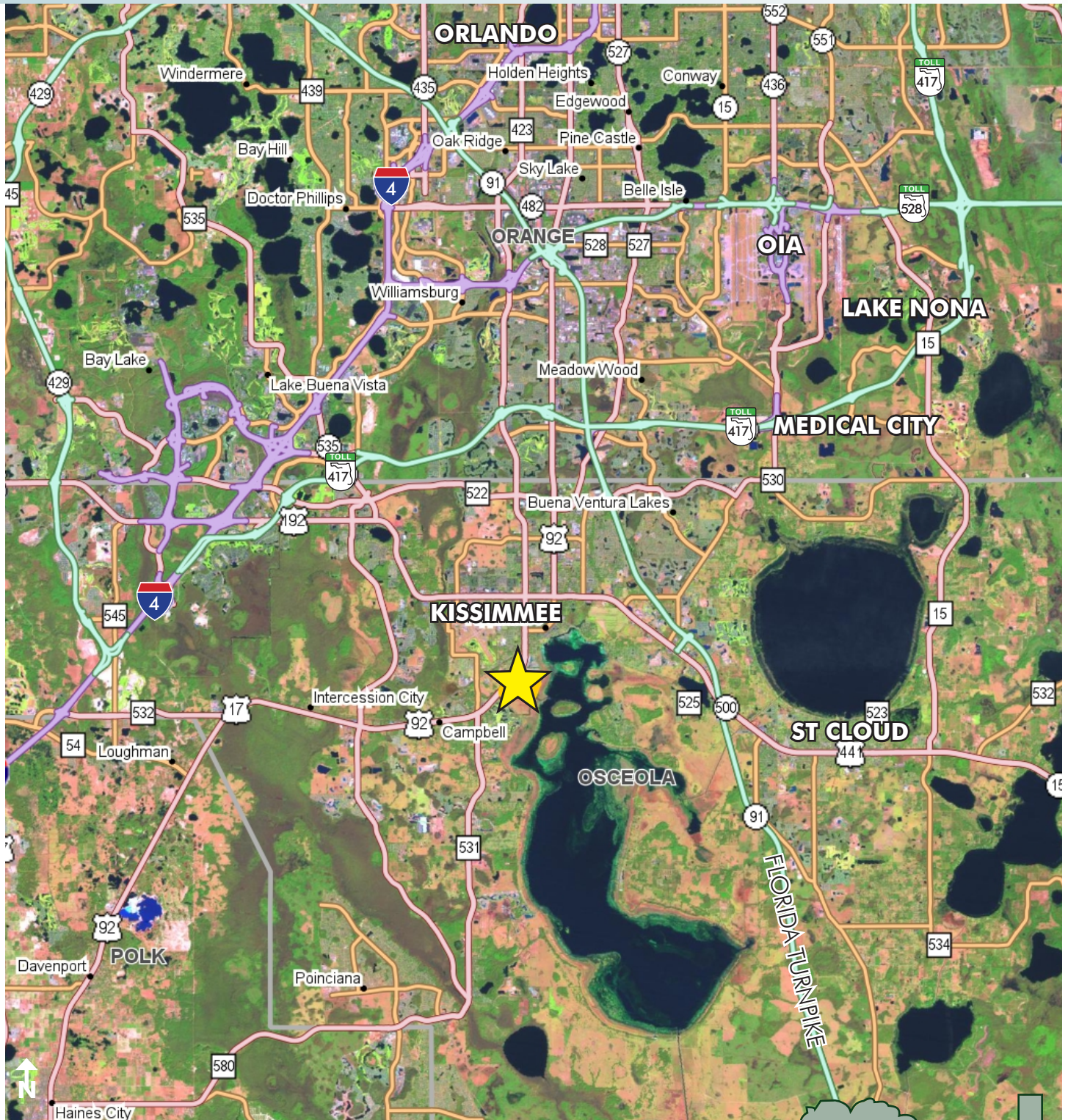
— Commercial Real Estate Investments | Management | Brokerage | Development | Land

Maury L. Carter & Associates, Inc.
407-422-3144 | www.maurycarter.com



PRIME DEVELOPMENT LAND CITY OF KISSIMMEE

190± acres • Osceola County, FL



LOCATION MAP

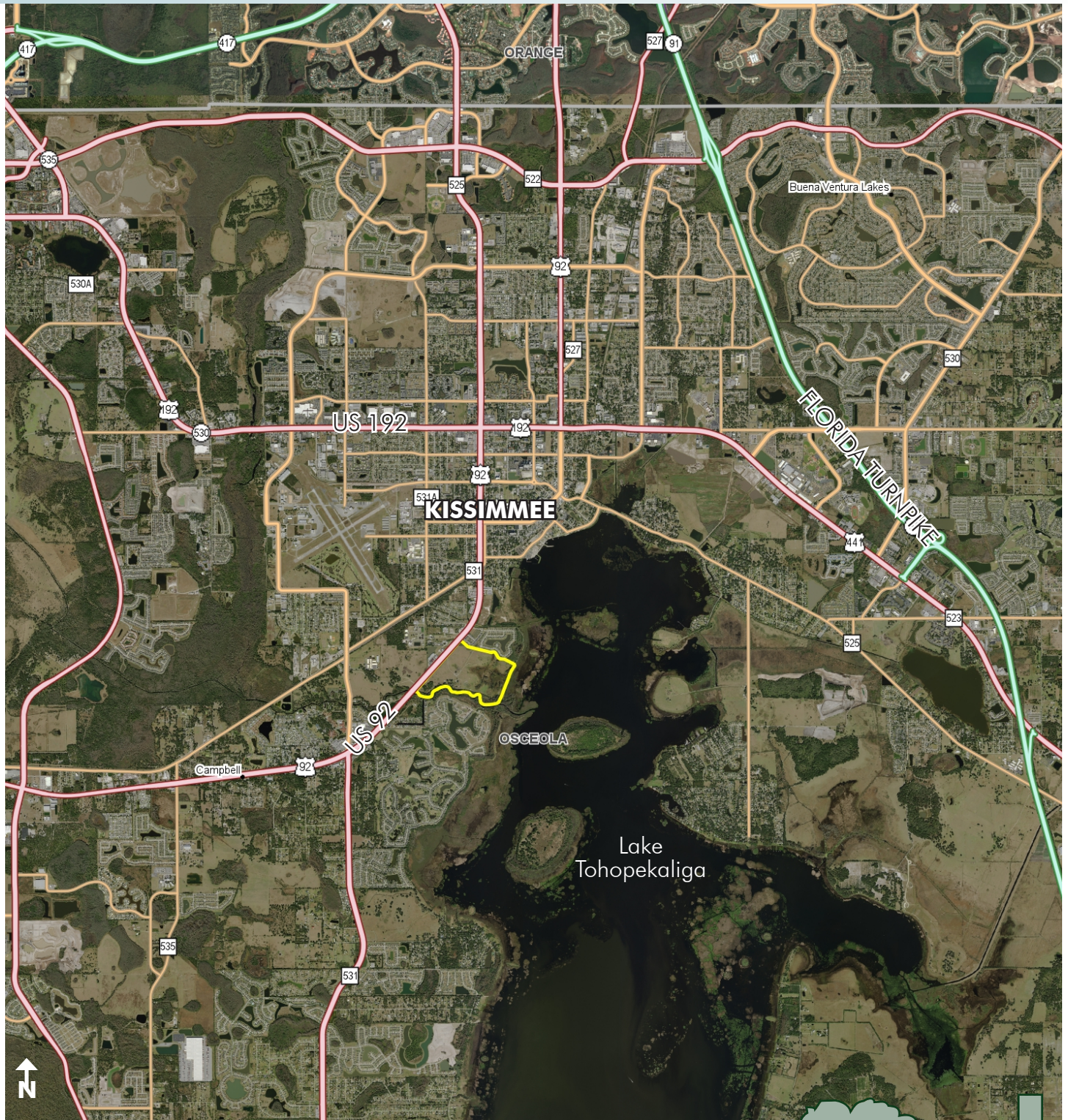
— Commercial Real Estate Investments | Management | Brokerage | Development | Land

Maury L. Carter & Associates, Inc.
407-422-3144 | www.maurycarter.com



PRIME DEVELOPMENT LAND CITY OF KISSIMMEE

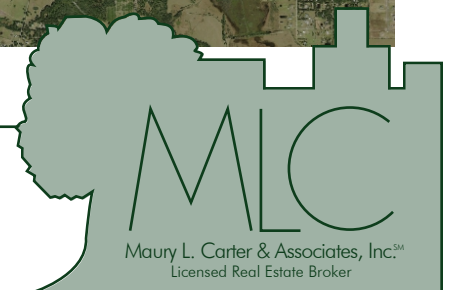
190± acres • Osceola County, FL



REGIONAL MAP

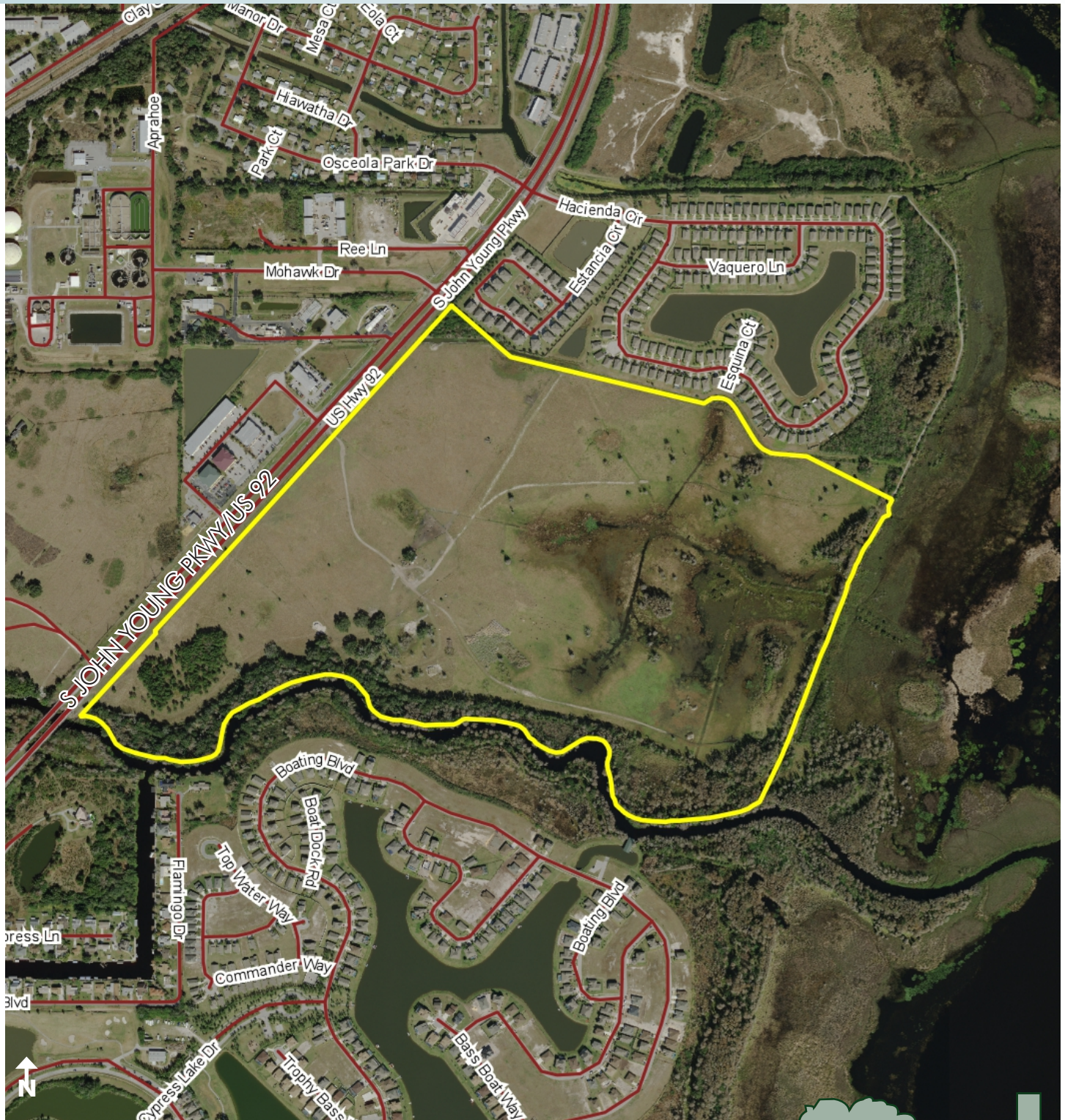
— Commercial Real Estate Investments | Management | Brokerage | Development | Land

Maury L. Carter & Associates, Inc.
407-422-3144 | www.maurycarter.com



PRIME DEVELOPMENT LAND CITY OF KISSIMMEE

190± acres • Osceola County, FL



PARCEL MAP

— Commercial Real Estate Investments | Management | Brokerage | Development | Land

Maury L. Carter & Associates, Inc.
407-422-3144 | www.maurycarter.com

