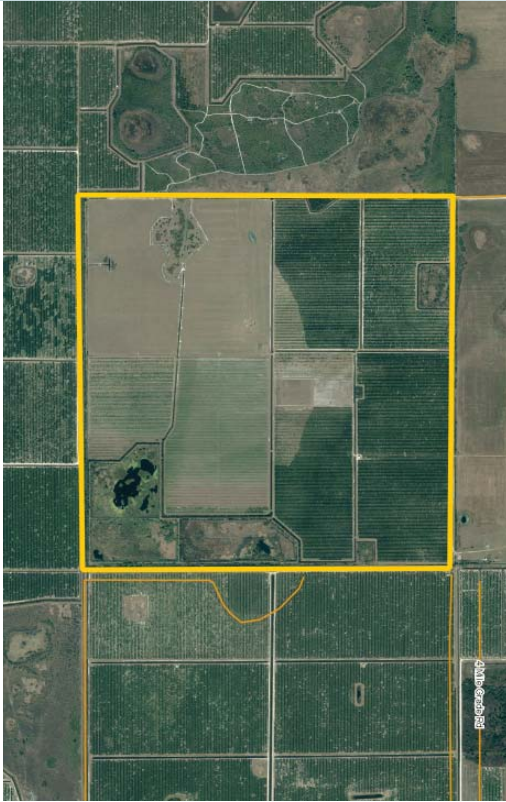


TURN-KEY CITRUS GROVE

640± acres

DeSoto County, FL



LOCATION

Located just inside DeSoto County, approximately 3 miles south of 10 Mile Grade Rd. Directly north of/ adjacent to Orange Co.

SIZE

640± acres

PRICE

\$3,500,000 or \$5,468/acre

ZONING

Agricultural

ROAD FRONTAGE

Located south of 10 Mile Grade Rd.

WELLS

10" and 12" wells currently water the grove

PARCEL ID

35-36-26-0000-0010-0000

DESCRIPTION

640± total acres of land available. Acreage breakdown:

- 120± acres of Hamlins
- 170± acres of Valencias
- 80± acres of Vernia
- 110± acres of pasture w/underground irrigation in place
- 10 acres not planted
- 65± acre reservoir
- 32± acres of land unusable/drainage

Offering subject to errors, omission, prior sale or withdrawal without notice.

LAND FOR SALE

DRIVE TIMES

1 hour to Sebring or Lake Okeechobee

1.5 hours to Fort Myers

2 hours to Tampa

2.5 hours to Orlando

— Commercial Real Estate Investments | Management | Brokerage | Development | Land

Maury L. Carter & Associates, Inc.

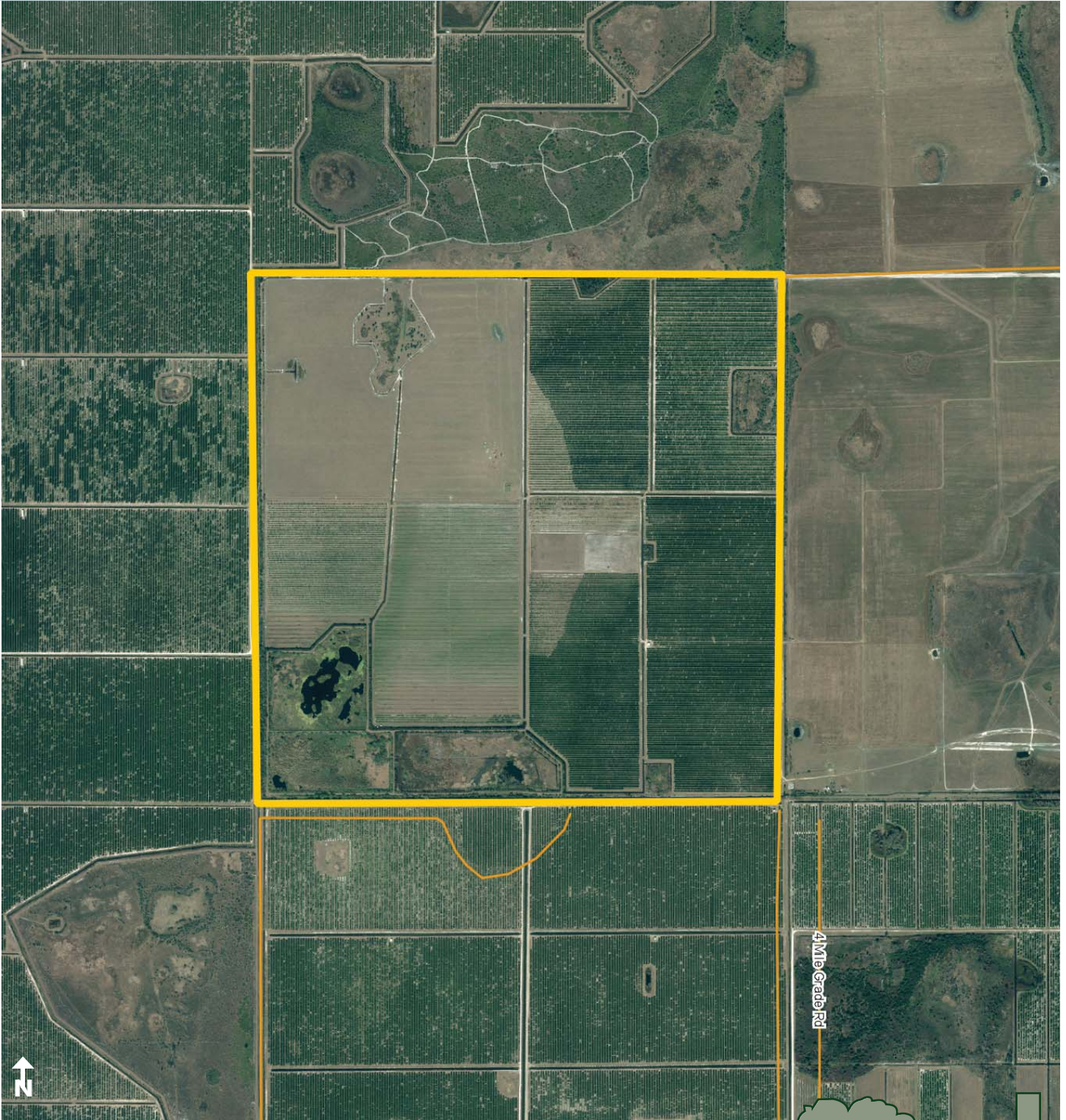
407-422-3144 | www.maurycarter.com



TURN-KEY CITRUS GROVE

640± acres

DeSoto County, FL



PROPERTY MAP

— Commercial Real Estate Investments | Management | Brokerage | Development | Land

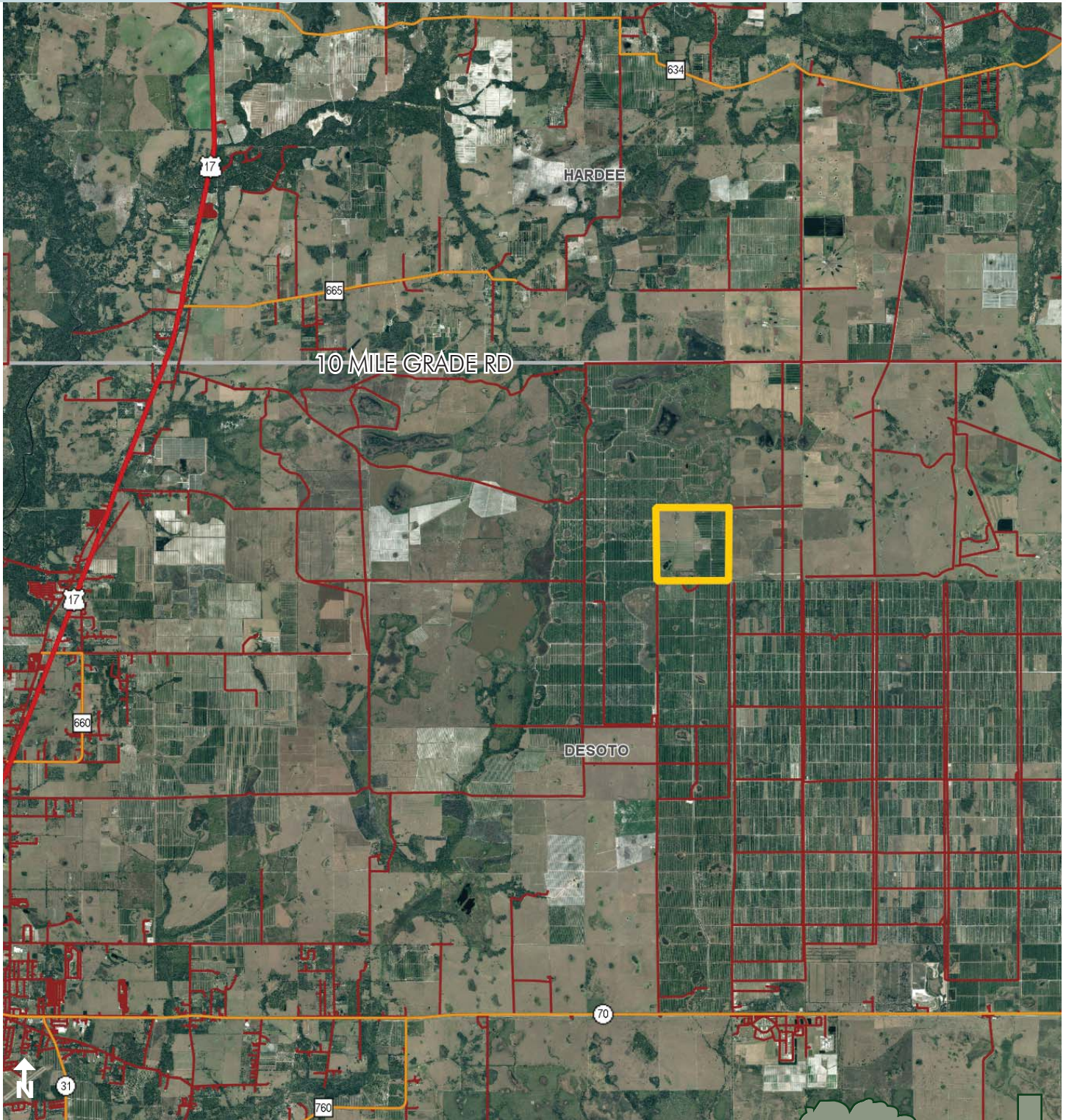
Maury L. Carter & Associates, Inc.
407-422-3144 | www.maurycarter.com



TURN-KEY CITRUS GROVE

640± acres

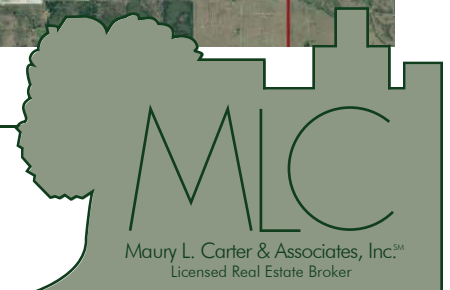
DeSoto County, FL



REGIONAL MAP

— Commercial Real Estate Investments | Management | Brokerage | Development | Land

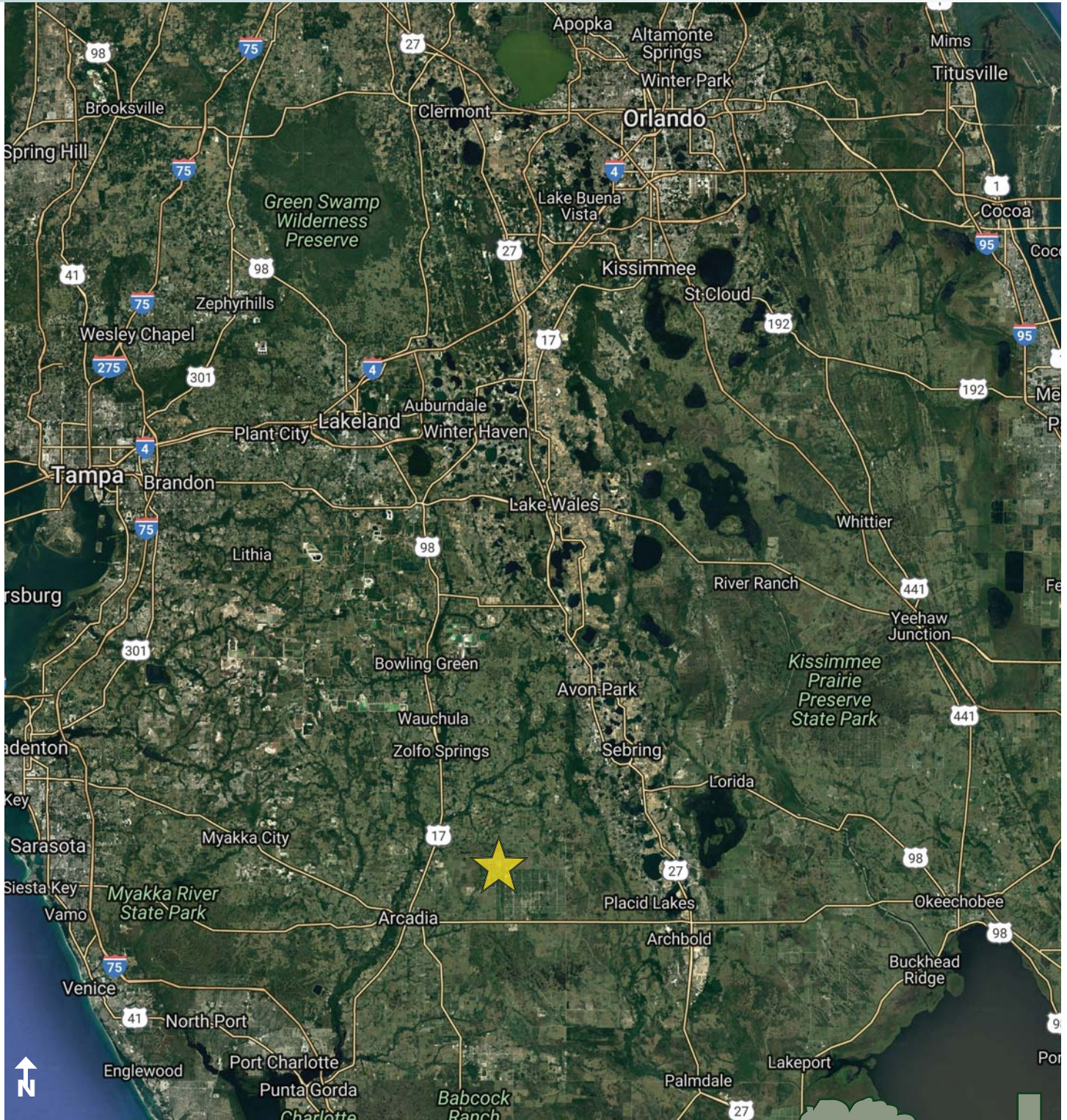
Maury L. Carter & Associates, Inc.
407-422-3144 | www.maurycarter.com



TURN-KEY CITRUS GROVE

640± acres

DeSoto County, FL



LOCATION MAP

— Commercial Real Estate Investments | Management | Brokerage | Development | Land

Maury L. Carter & Associates, Inc.
407-422-3144 | www.maurycarter.com

