

# RESIDENTIAL LAND NEAR THEME PARKS

120± acres

Osceola County, FL



## LOCATION

Located on West Harbor Road off of Pleasant Hill Road in Osceola County, Florida. One mile south of John Young Parkway, close to City of Kissimmee lakefront. 2.5 miles to the new Valencia College - Poinciana campus.

## SIZE

120± acres

## PRICE

\$60,000/acre or \$7,200,000

## ZONING/FLU

Low Density Residential

## ROAD FRONTAGE

Harbor Road ends at property.

## DESCRIPTION

High and dry tract prime for development.

Offering subject to errors, omission, prior sale or withdrawal without notice.

## DRIVE TIMES

- 45 minutes to Walt Disney World
- 35 minutes to Sea World and Orlando International Airport
- 1 hour 15 minutes to east coast beaches

LAND FOR SALE

— Commercial Real Estate Investments | Management | Brokerage | Development | Land

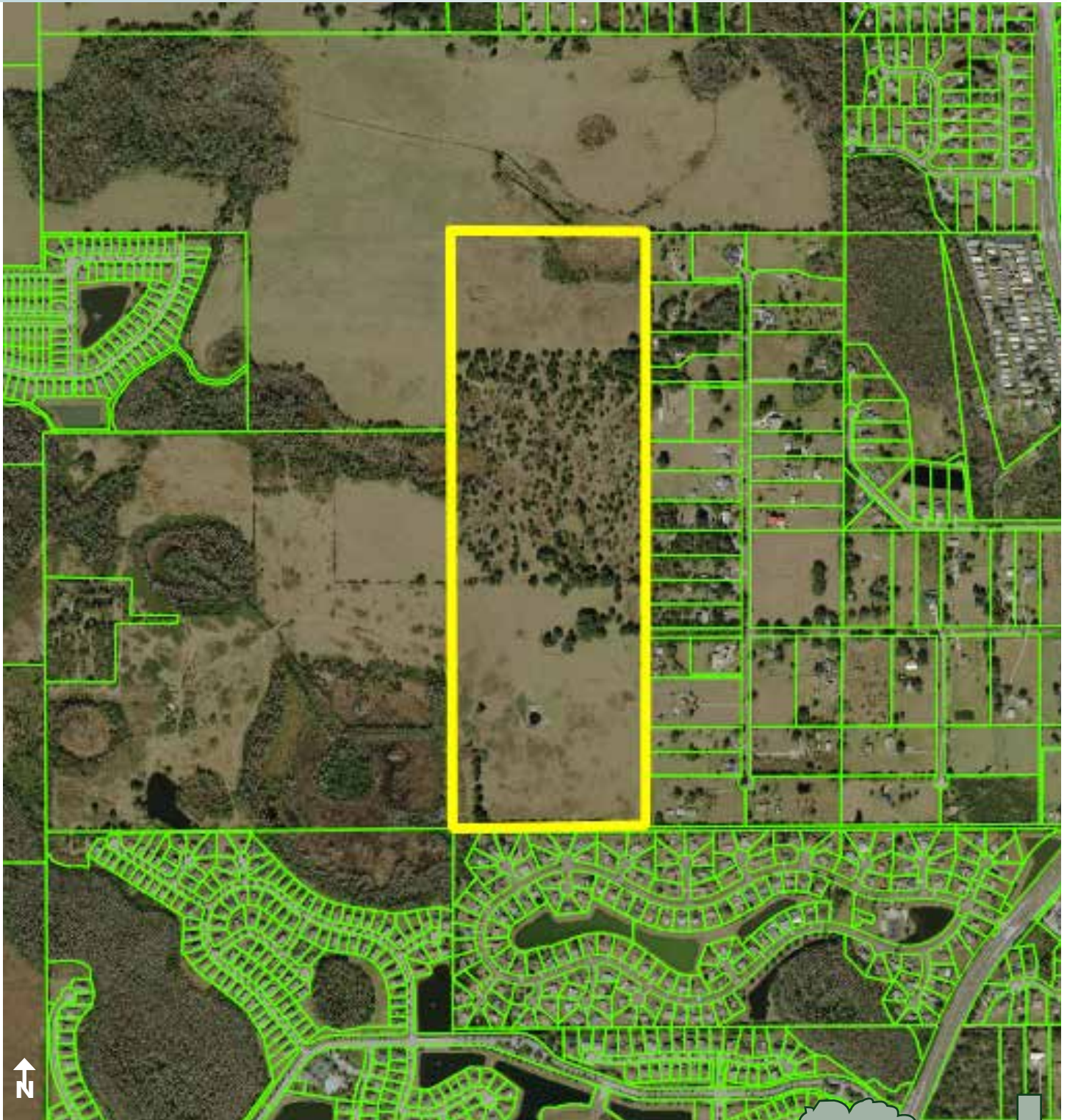
Maury L. Carter & Associates, Inc.  
407-422-3144 | [www.maurycarter.com](http://www.maurycarter.com)



# RESIDENTIAL LAND NEAR THEME PARKS

120± acres

Osceola County, FL



PROPERTY MAP

— Commercial Real Estate Investments | Management | Brokerage | Development | Land

Maury L. Carter & Associates, Inc.  
407-422-3144 | [www.maurycarter.com](http://www.maurycarter.com)

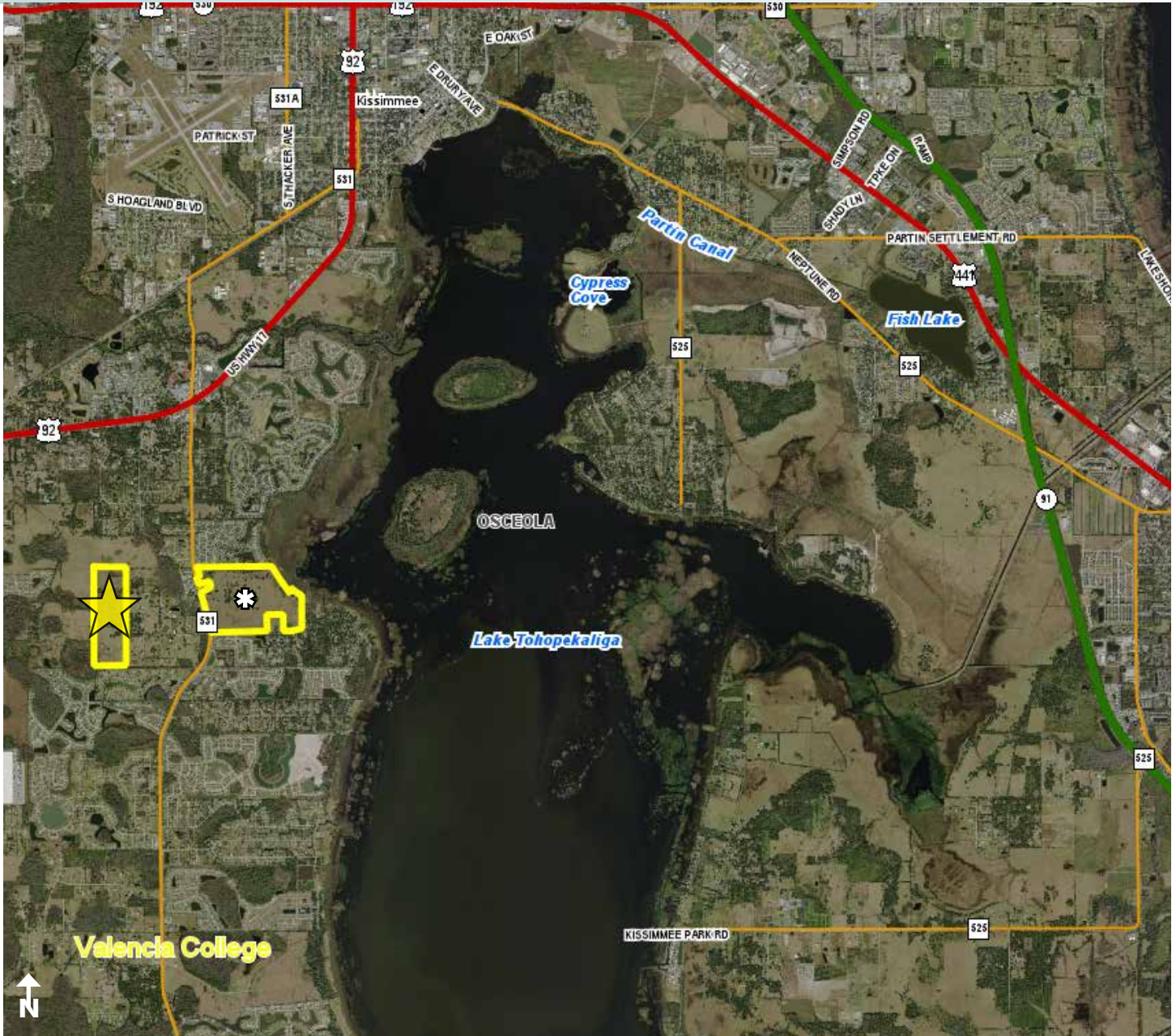




# RESIDENTIAL LAND NEAR THEME PARKS

120± acres

Osceola County, FL



LOCATION MAP

\* Additional property available - please see flyer for Osceola County 200 acres.

— Commercial Real Estate Investments | Management | Brokerage | Development | Land

Maury L. Carter & Associates, Inc.  
407-422-3144 | [www.maurycarter.com](http://www.maurycarter.com)

