

BLACK HAMMOCK AREA - 2 LOTS

8.04± total acres

Oviedo, Seminole County, FL

LAND FOR SALE



LOCATION/DESCRIPTION

Located on Howard Avenue in the historic Black Hammock agricultural area in Oviedo, Seminole County, Florida. This property would double perfectly as a hobby farm. Grow trees, vegetables, fruits and other items on site. In addition, one could raise sheep, goats, horse or cattle on these sites. The soil consists of some of the richest growing soil in the region. If buyer gets under contract, a lot search request at Seminole County will be required by Seller at Buyer's cost.

PARCEL A Parcel ID# 25-20-31-5BA-0000-165A

4.36± acres

\$129,000 (inventory NOT included)

PARCEL B Parcel ID# 25-20-31-5BA-0000-1650

3.68± acres

\$129,000 (inventory NOT included)

ZONING

A-5 Rural (1 du/5 acres)

UTILITIES

Electricity available to site. No septic on property.



Offering subject to errors, omission, prior sale or withdrawal without notice.

— Commercial Real Estate Investments | Management | Brokerage | Development | Land

Maury L. Carter & Associates, Inc.
407-422-3144 | www.maurycarter.com



BLACK HAMMOCK AREA - 2 LOTS

8.04± total acres

Oviedo, Seminole County, FL

LAND FOR SALE



— Commercial Real Estate Investments | Management | Brokerage | Development | Land

Maury L. Carter & Associates, Inc.

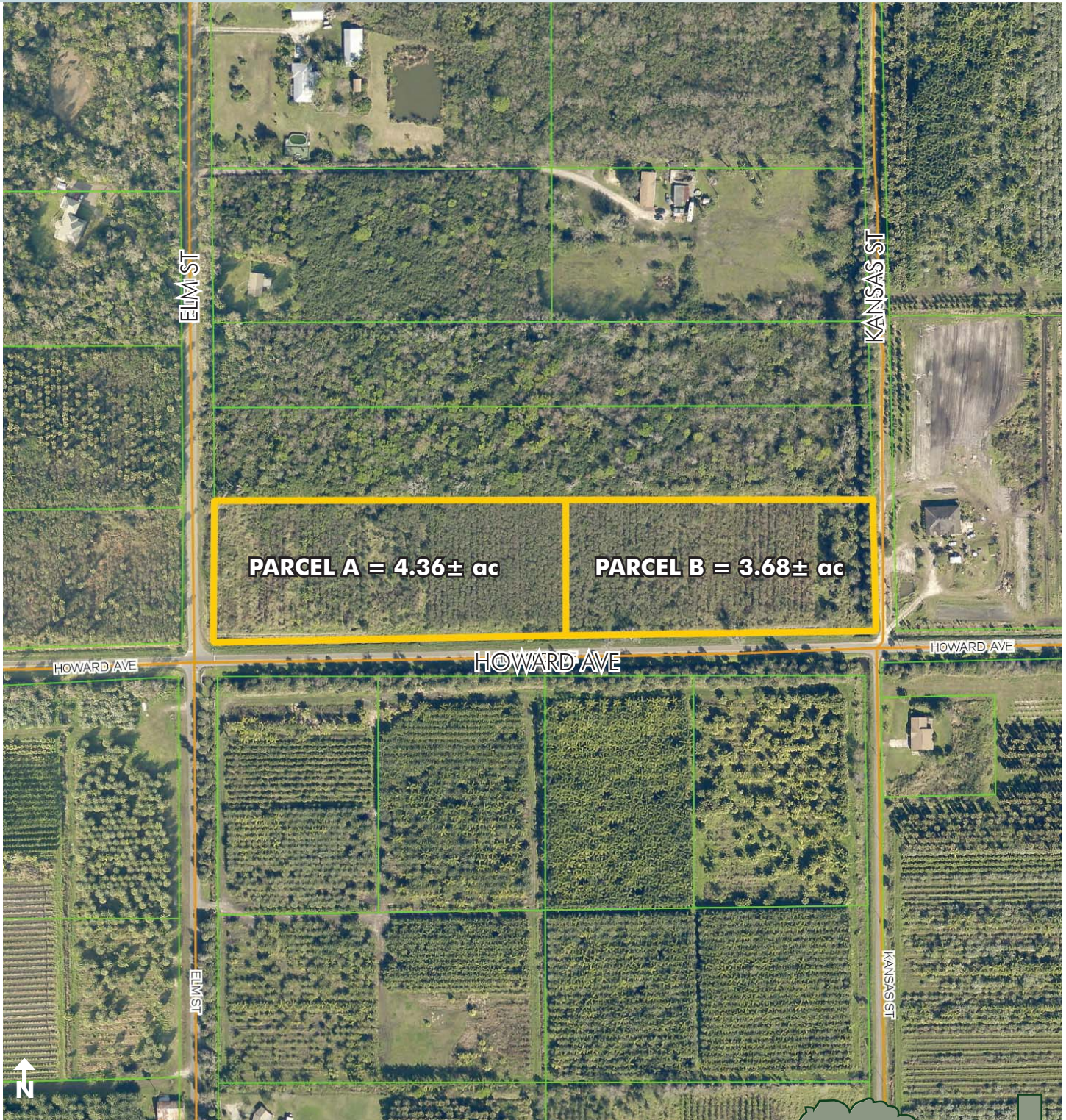
407-422-3144 | www.maurycarter.com



BLACK HAMMOCK AREA - 2 LOTS

8.04± total acres

Oviedo, Seminole County, FL



PROPERTY MAP

— Commercial Real Estate Investments | Management | Brokerage | Development | Land

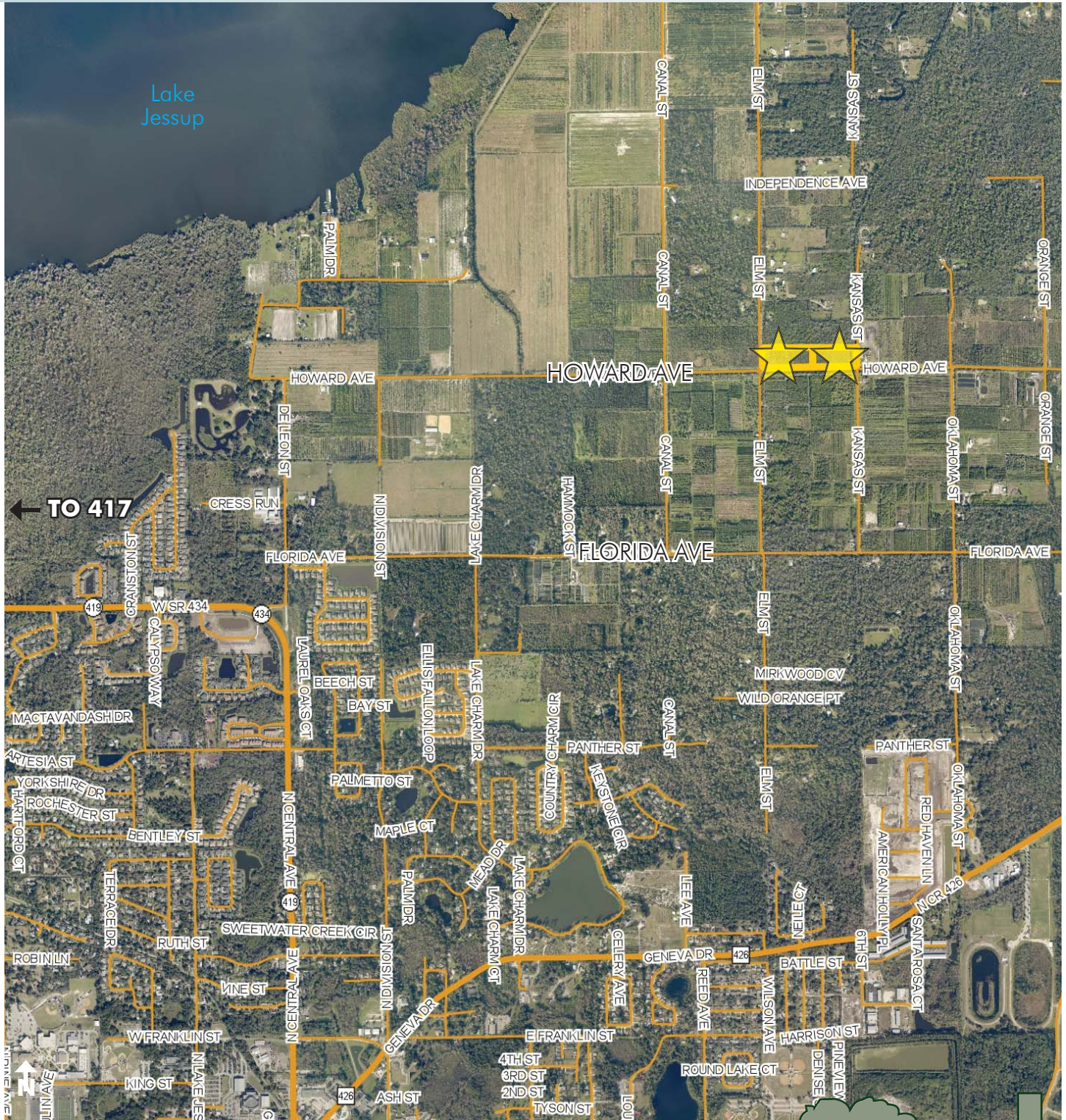
Maury L. Carter & Associates, Inc.
407-422-3144 | www.maurycarter.com



BLACK HAMMOCK AREA - 2 LOTS

8.04± total acres

Oviedo, Seminole County, FL



REGIONAL MAP

— Commercial Real Estate Investments | Management | Brokerage | Development | Land

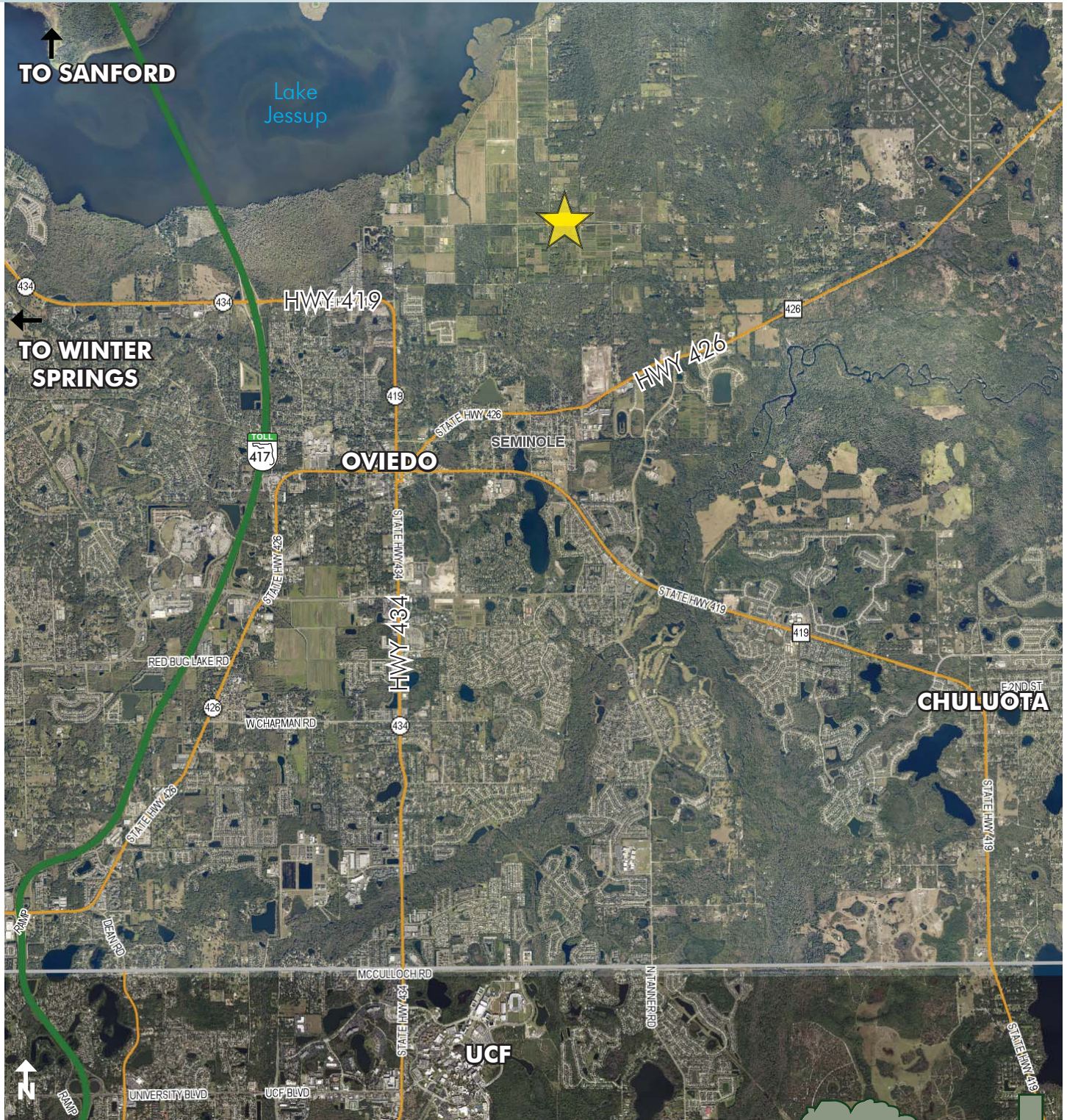
Maury L. Carter & Associates, Inc.
407-422-3144 | www.maurycarter.com



BLACK HAMMOCK AREA - 2 LOTS

8.04± total acres

Oviedo, Seminole County, FL



LOCATION MAP

— Commercial Real Estate Investments | Management | Brokerage | Development | Land

Maury L. Carter & Associates, Inc.
407-422-3144 | www.maurycarter.com

