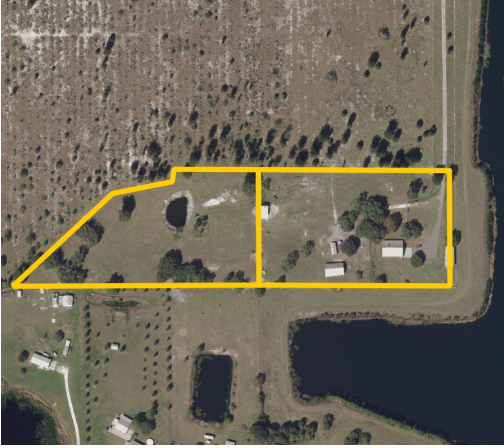


NARCOOSSEE AREA LAND

10.9± Acres

Osceola County, FL



DESCRIPTION/LOCATION

10.9± acres located in the hottest area of Osceola County. Property has a nice 3/2 home with a shop and is all fenced. This property is unique due to the location of several proposed developments around it yet it offers quiet living. Great place to enjoy your animals with pristine surroundings. Opportunity to develop. This is a versatile property that has it all in the middle of Central Florida.

Located on South Eagle Road in Narcoossee. Just 15 minutes to Medical City/Lake Nona and the Orlando International Airport. Close to all area theme parks and 1 hour to the beach. Proposed beltway will be less than 5 minutes away.

SIZE

10.9± Acres

PRICE

\$1,250,000

UTILITIES

Offsite / Jones Road

ZONING

Low density residential - up to 8 units per acre

PARCEL IDs

28-25-31-0000-0035-0000

29-25-31-0000-0014-0000

Offering subject to errors, omission, prior sale or withdrawal without notice.

FUTURE DEVELOPMENT LAND

— Commercial Real Estate Investments | Management | Brokerage | Development | Land

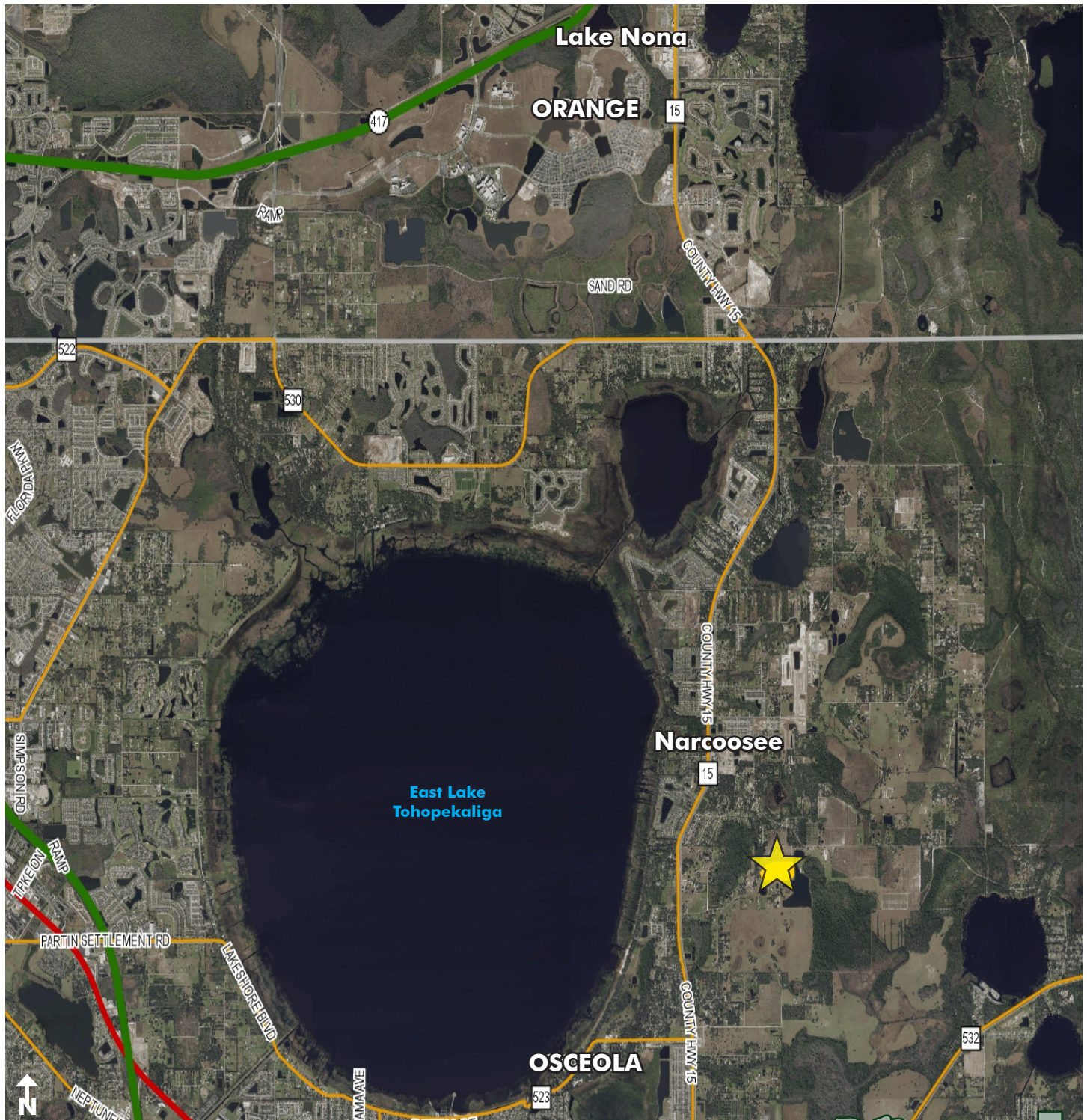
Maury L. Carter & Associates, Inc.
407-422-3144 | www.maurycarter.com



NARCOOSSEE AREA LAND

10.9± Acres

Osceola County, FL



LOCATION MAP

— Commercial Real Estate Investments | Management | Brokerage | Development | Land

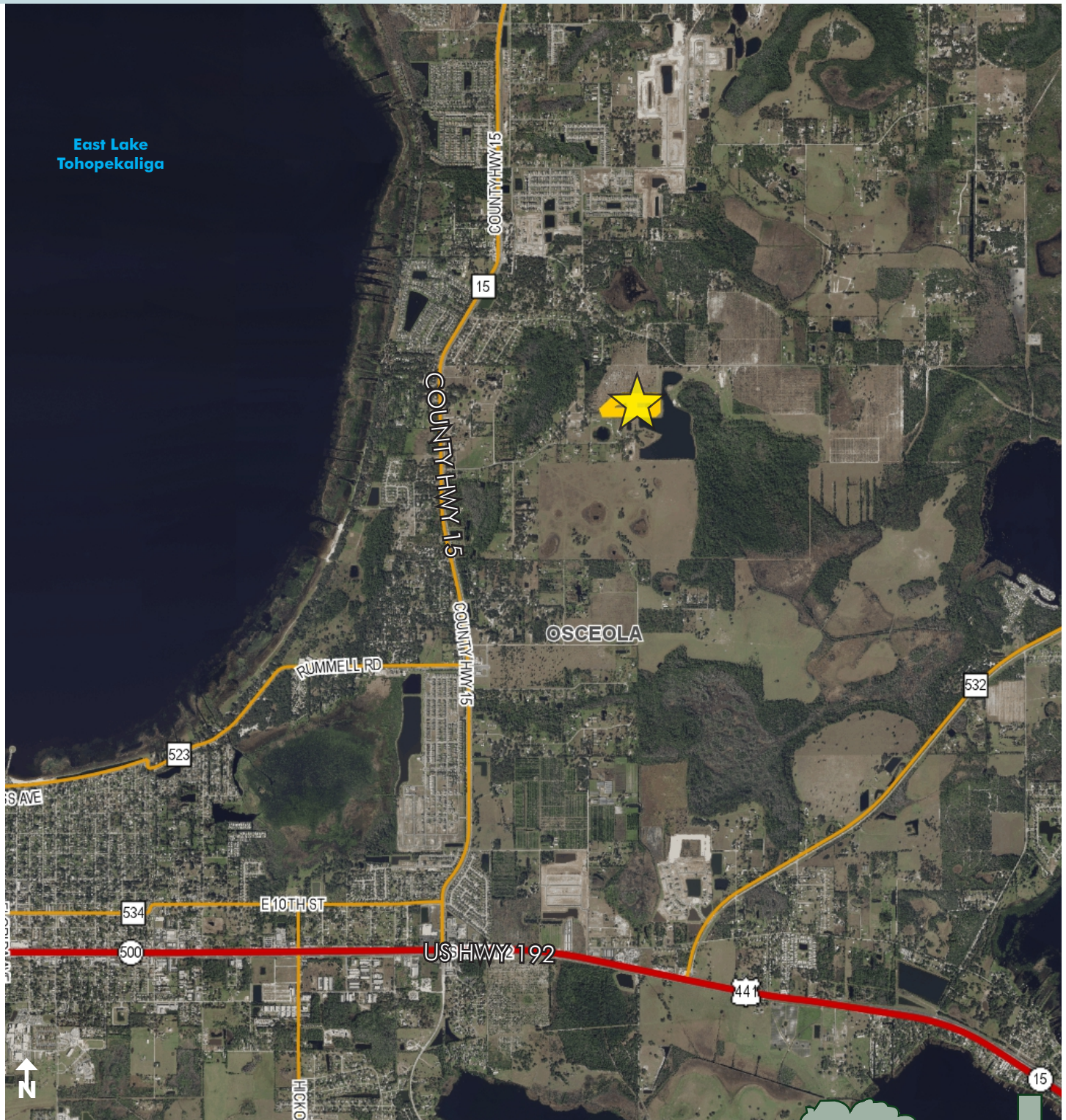
Maury L. Carter & Associates, Inc.
407-422-3144 | www.maurycarter.com



NARCOOSSEE AREA LAND

10.9± Acres

Osceola County, FL



REGIONAL MAP

— Commercial Real Estate Investments | Management | Brokerage | Development | Land

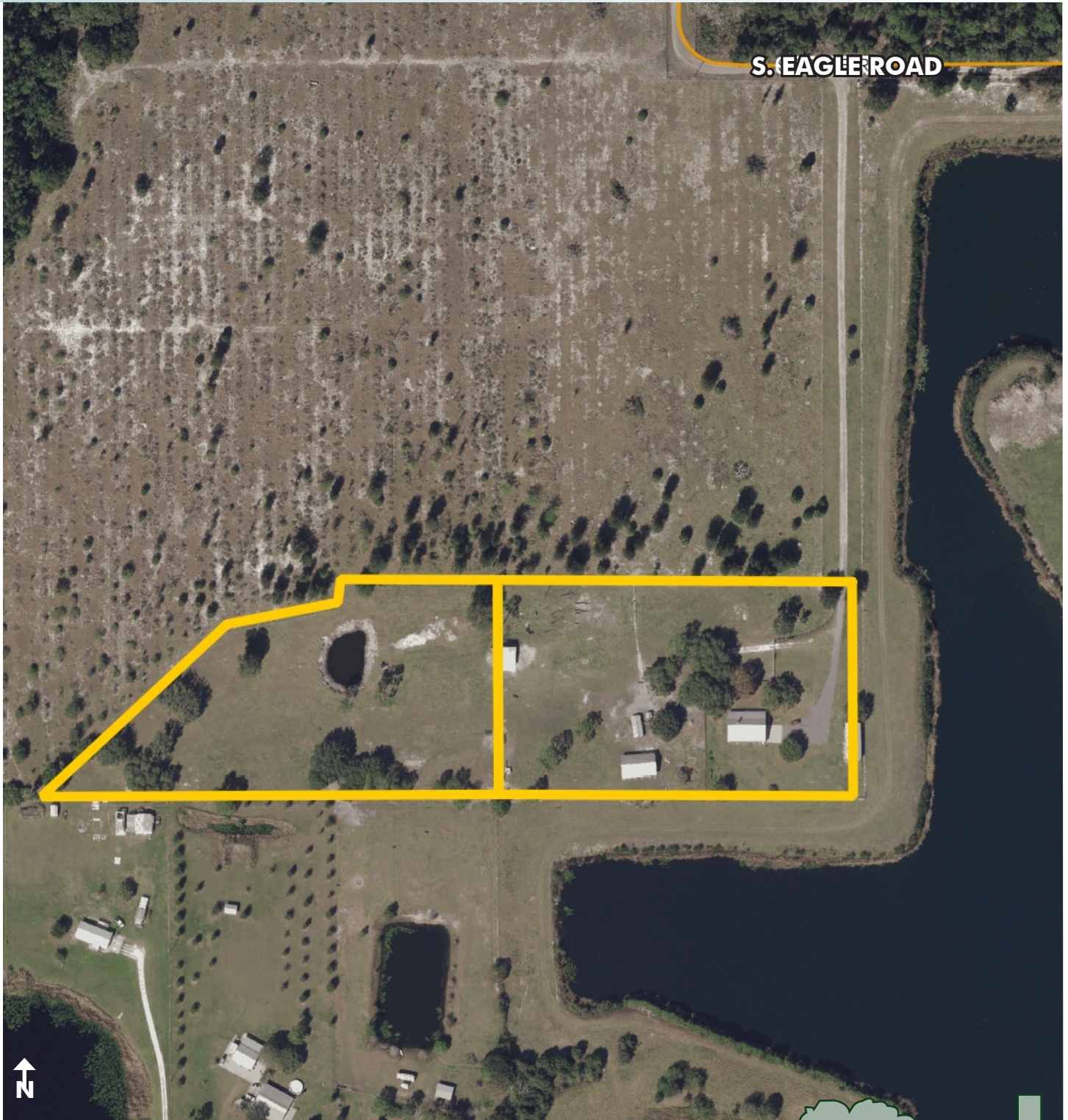
Maury L. Carter & Associates, Inc.
407-422-3144 | www.maurycarter.com



NARCOOSSEE AREA LAND

10.9± Acres

Osceola County, FL



PROPERTY MAP

— Commercial Real Estate Investments | Management | Brokerage | Development | Land

Maury L. Carter & Associates, Inc.
407-422-3144 | www.maurycarter.com

