

ORLANDO INT'L AIRPORT/MEDICAL CITY AREA

2 PARCELS - GOLDENROD/HOFFNER, GOLDENROD/LEE VISTA BLVD

6.6± acres & 4.5± acres • Orlando, FL

**PARCEL B
SOLD!**

**PARCEL A
UNDER CONTRACT**

LAND FOR SALE



LOCATION

South Orlando, north of Lake Nona/Medical City and just one mile north of the Orlando International Airport. NE corner of Goldenrod Road and Lee Vista Boulevard, SW corner of Hoffner Avenue and Goldenrod Road.

SIZE

Parcel A: 6.6± acres - **UNDER CONTRACT**

Parcel B: 4.5± acres - **SOLD**

PRICE

Parcel A: \$2,874,960 - **UNDER CONTRACT**

Parcel B: \$1,960,000 - **SOLD**

FUTURE LAND USE

Orlando Corporate Center DRI

ZONING

Commercial; PD in City of Orlando

ROAD FRONTAGE

Parcel A: 400' on Lee Vista Blvd, 530' on Goldenrod Rd

Parcel B: 490' on Hoffner Ave, 795' on Goldenrod Rd

UTILITIES

City of Orlando

DESCRIPTION

Parcel A: Approved for 21,650sf of commercial.

Parcel B: Approved for 22,000sf of commercial.

Offering subject to errors, omission, prior sale or withdrawal without notice.



— Commercial Real Estate Investments | Management | Brokerage | Development | Land

Maury L. Carter & Associates, Inc.

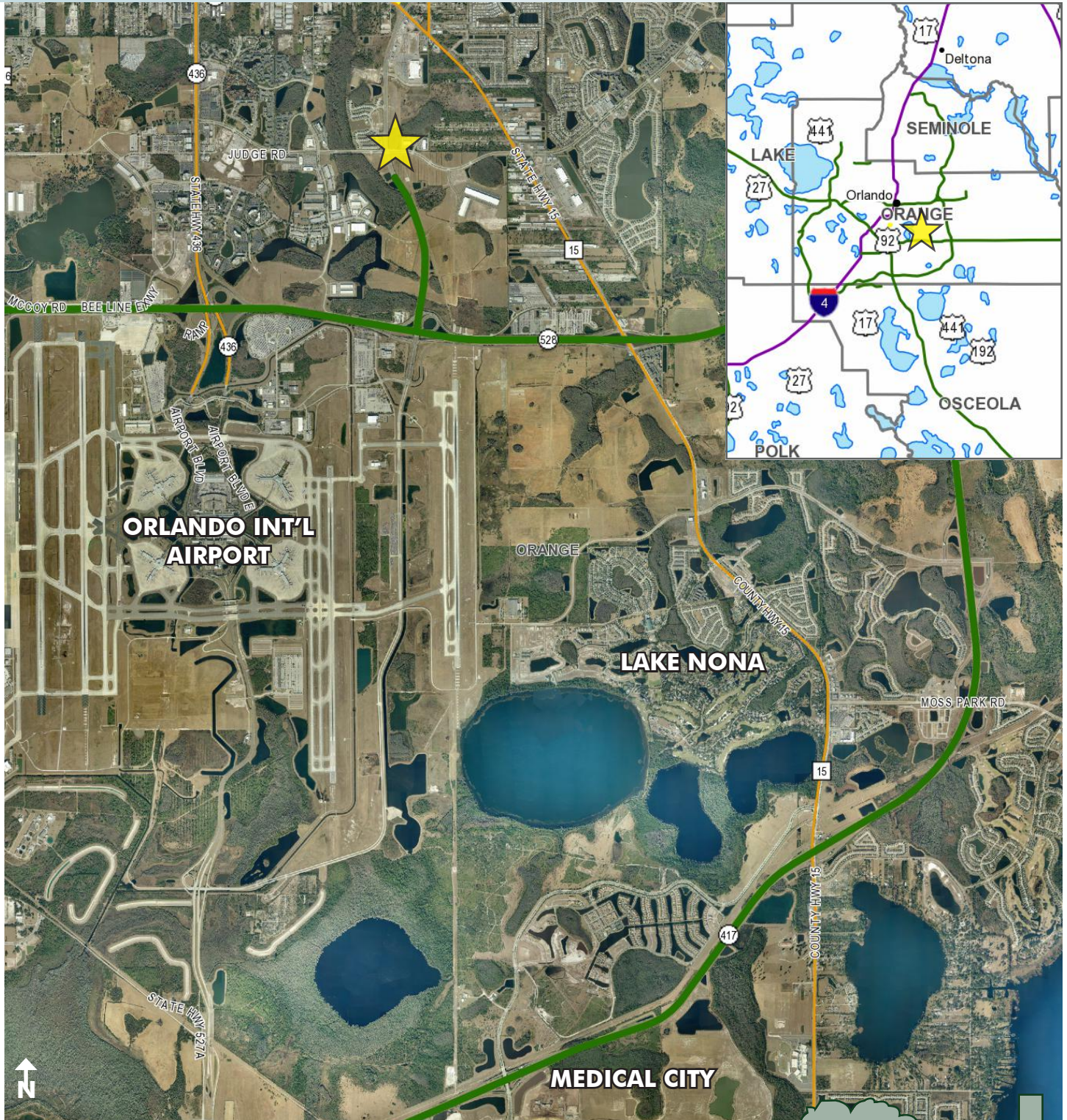
407-422-3144 | www.maurycarter.com



ORLANDO INT'L AIRPORT/MEDICAL CITY AREA

LEE VISTA/GOLDENROD

6.6± acres • Orlando, FL



LOCATION MAP

— Commercial Real Estate Investments | Management | Brokerage | Development | Land

Maury L. Carter & Associates, Inc.
407-422-3144 | www.maurycarter.com



ORLANDO INT'L AIRPORT/MEDICAL CITY AREA

2 PARCELS - GOLDENROD/HOFFNER, GOLDENROD/LEE VISTA BLVD

6.6± acres & 4.5± acres • Orlando, FL



VICINITY MAP

— Commercial Real Estate Investments | Management | Brokerage | Development | Land

Maury L. Carter & Associates, Inc.
407-422-3144 | www.maurycarter.com

