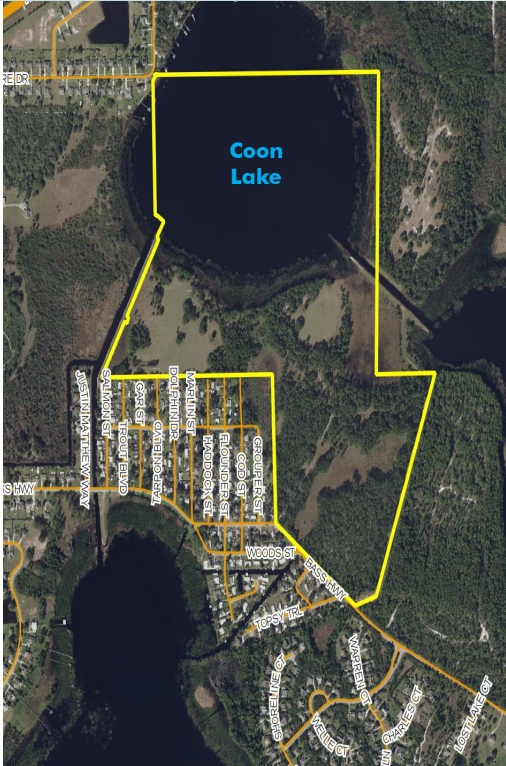


# COON LAKE LAND

234± gross acres/130± net acres  
Osceola County

**UNDER  
CONTRACT**



## LOCATION/DESCRIPTION

Beautiful property located on the southern end of Coon Lake in Osceola County. Coon Lake is on the Alligator chain of lakes with access to 6 lakes. This property offers tremendous opportunities for hunting, fishing, camping, and outdoor enjoyment. Property is currently leased for cattle and hunting. Has great potential for residential development.

## SIZE

234± acres

## PRICE

\$4,000,000

## ZONING

AC - Ag Conservation

## FUTURE LAND USE

Low Density Residential (LDR) 3-8 units/acre

## ROAD FRONTAGE

1200± feet on Bass Highway

## LAKE FRONTAGE

2800± feet of direct frontage on Coon Lake

Offering subject to errors, omission, prior sale or withdrawal without notice.

DEVELOPMENT POTENTIAL

— Commercial Real Estate Investments | Management | Brokerage | Development | Land

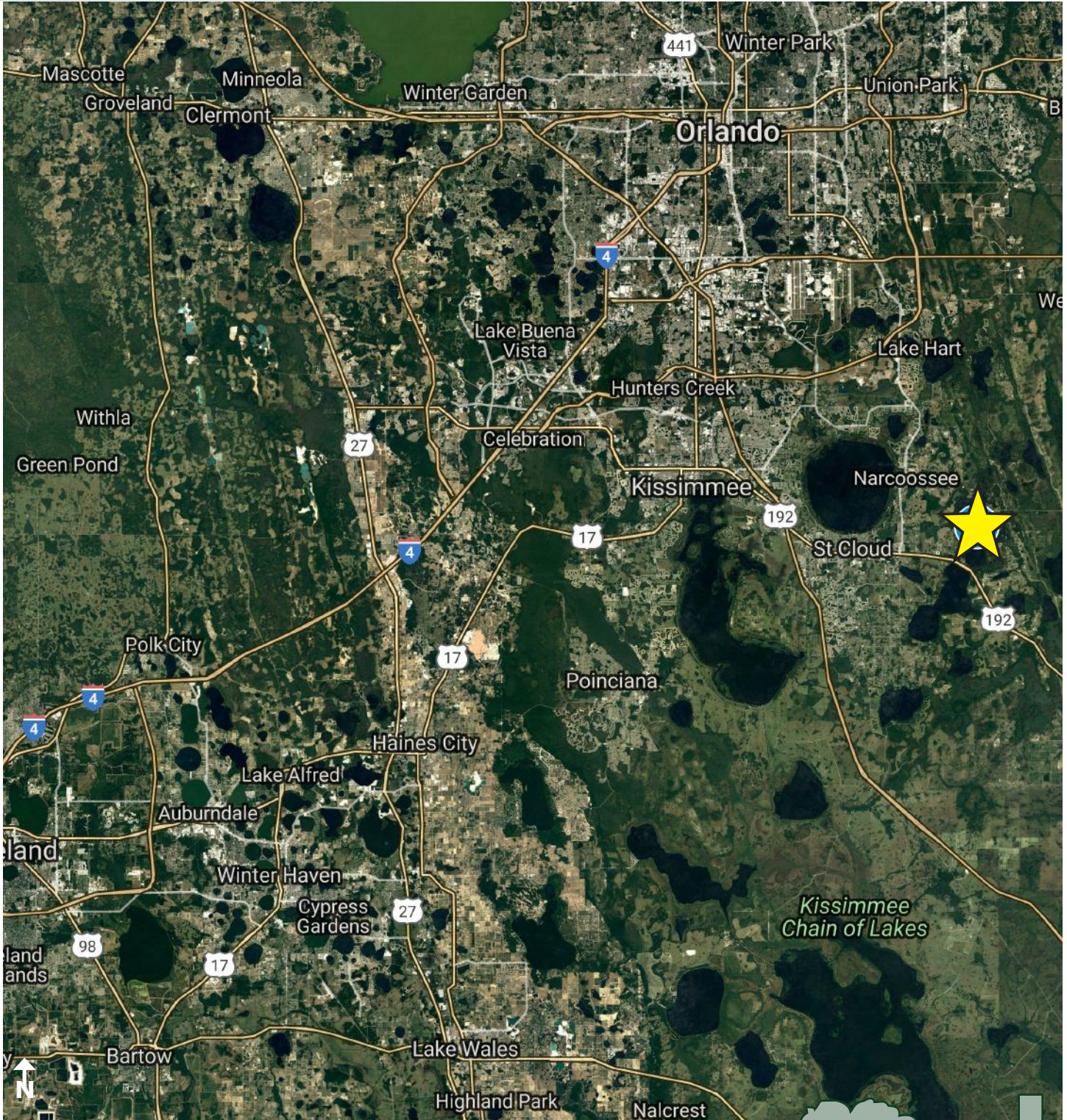
Maury L. Carter & Associates, Inc.  
407-422-3144 | [www.maurycarter.com](http://www.maurycarter.com)



# COON LAKE LAND

234± gross acres/130± net acres  
Osceola County

**UNDER  
CONTRACT**



LOCATION MAP

— Commercial Real Estate Investments | Management | Brokerage | Development | Land

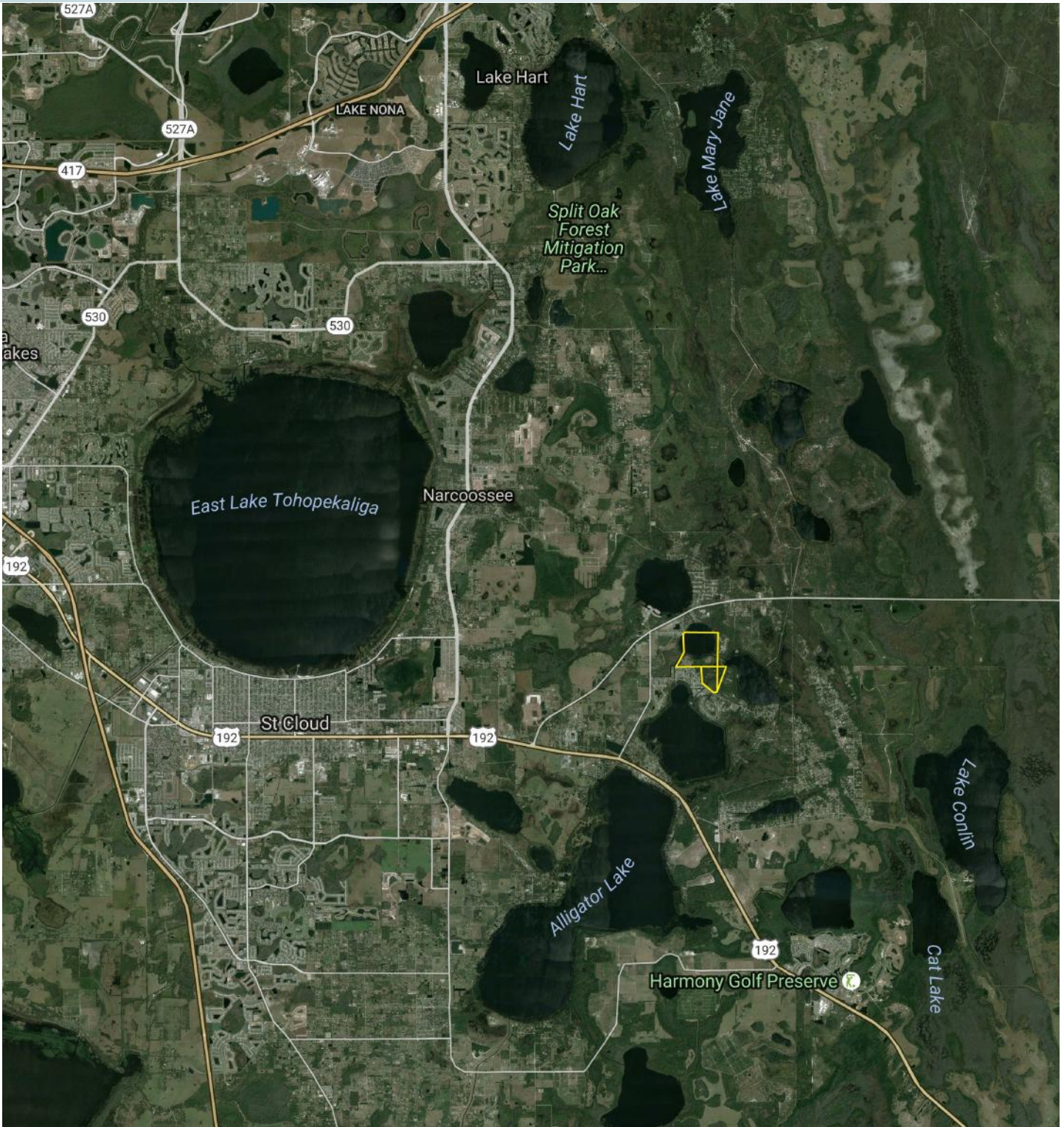
Maury L. Carter & Associates, Inc.  
407-422-3144 | [www.maurycarter.com](http://www.maurycarter.com)



# COON LAKE LAND

234± gross acres/130± net acres  
Osceola County

**UNDER  
CONTRACT**



REGIONAL MAP

— Commercial Real Estate Investments | Management | Brokerage | Development | Land

Maury L. Carter & Associates, Inc.  
407-422-3144 | [www.maurycarter.com](http://www.maurycarter.com)



# COON LAKE LAND

234± gross acres/130± net acres  
Osceola County

**UNDER  
CONTRACT**



PROPERTY MAP

— Commercial Real Estate Investments | Management | Brokerage | Development | Land

Maury L. Carter & Associates, Inc.  
407-422-3144 | [www.maurycarter.com](http://www.maurycarter.com)

