

INFILL RESIDENTIAL LAKEFRONT LAND

3.76± acres

Orange County, FL



LOCATION

Daetwyler Drive in Belle Isle, Florida

SIZE

3.76± acres

PRICE

\$5,350,000

ZONING/FLU

R-2

LAKE FRONTAGE

400 feet of frontage along Lake Conway

ROAD FRONTAGE

330 feet on Daetwyler Drive

POTENTIAL DEVELOPMENT SCENARIOS

- 30 Townhomes or
- 11 Single Family Homes

See pages 5 & 6 for concept plans

DESCRIPTION

ATTENTION RESIDENTIAL DEVELOPERS...THIS WON'T LAST! Excellent development site on the Conway chain of lakes offering beautiful views of Lake Conway within a short distance from city amenities. This site is located approximately 10 minutes from Orlando International Airport, 20 minutes from Downtown Orlando and 25 minutes from Walt Disney World and the attractions. Extensive economic activity in Orange County make this prime property for residential development. A 40' wide concrete dock, ramp and sea wall are located on the property that will can stay in place with deeded access if the single family development option is chosen. Dock will need to be removed if townhomes are developed.

Offering subject to errors, omission, prior sale or withdrawal without notice.

— Commercial Real Estate Investments | Management | Brokerage | Development | Land

Maury L. Carter & Associates, Inc.
407-422-3144 | www.maurycarter.com



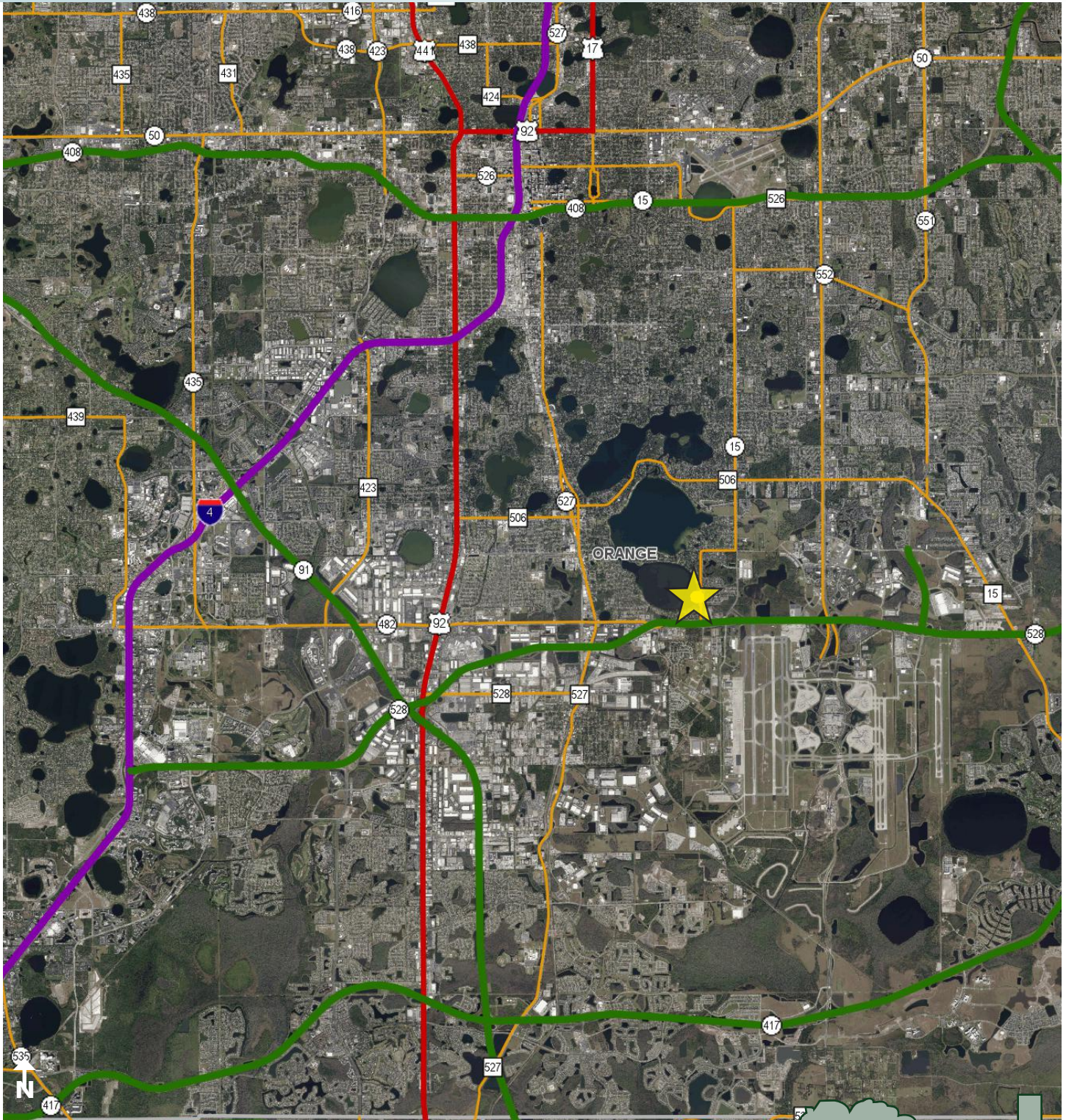
Maury L. Carter & Associates, Inc.SM
Licensed Real Estate Broker

SINGLE FAMILY OR TOWNHOME

INFILL RESIDENTIAL LAKEFRONT LAND

3.76± acres

Orange County, FL



LOCATION MAP

— Commercial Real Estate Investments | Management | Brokerage | Development | Land

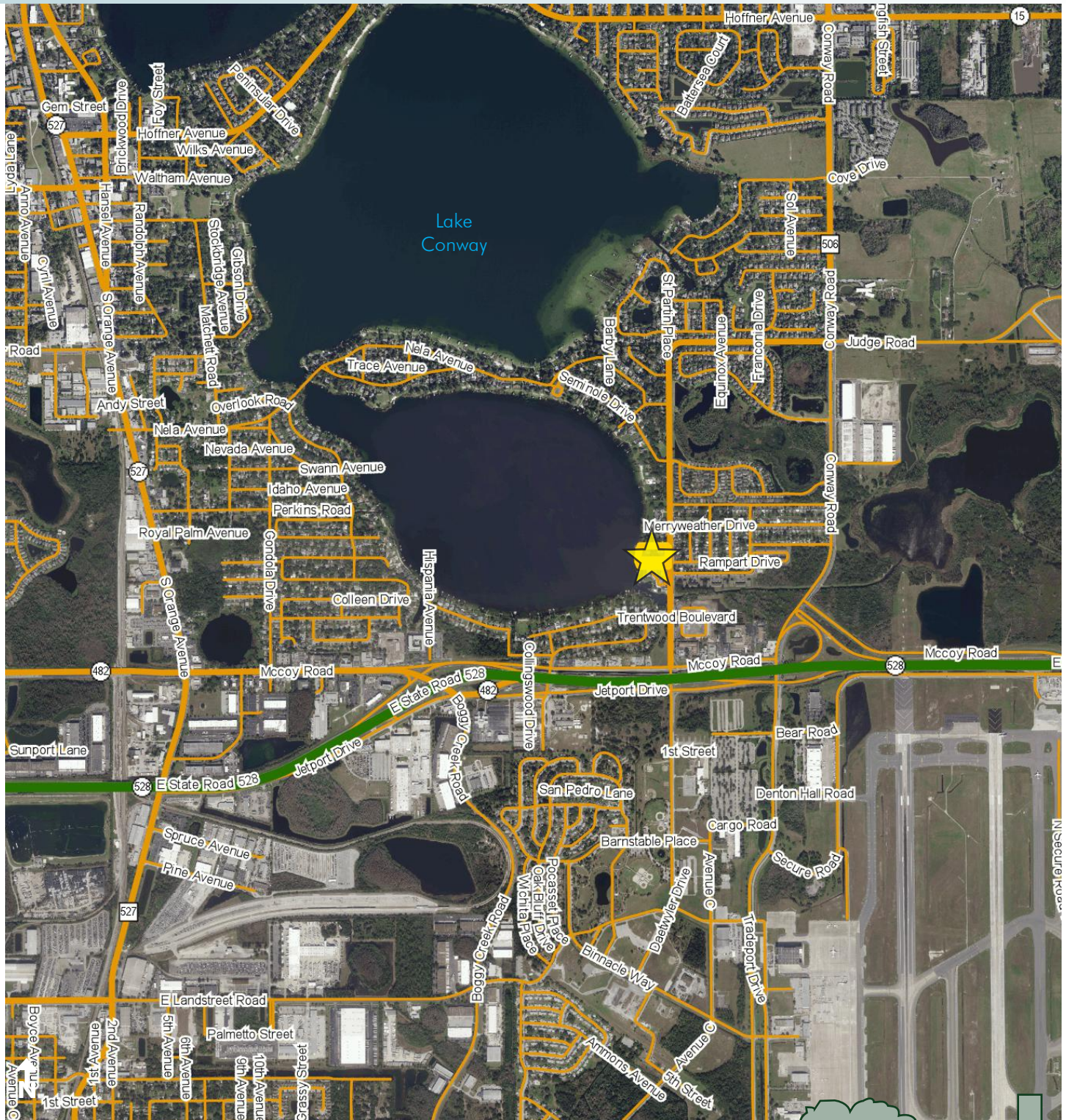
Maury L. Carter & Associates, Inc.
407-422-3144 | www.maurycarter.com



INFILL RESIDENTIAL LAKEFRONT LAND

3.76± acres

Orange County, FL



REGIONAL MAP

— Commercial Real Estate Investments | Management | Brokerage | Development | Land

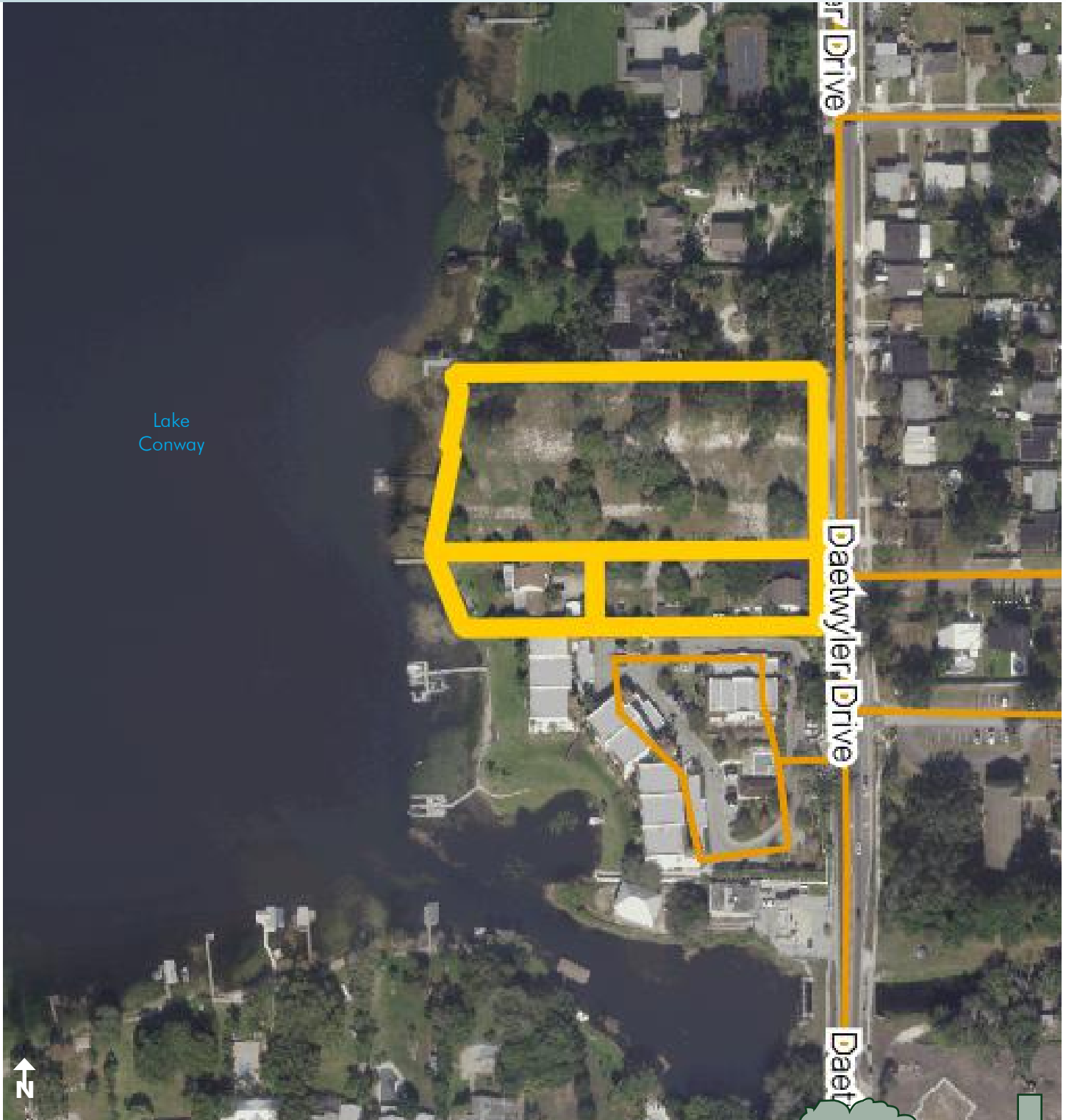
Maury L. Carter & Associates, Inc.
407-422-3144 | www.maurycarter.com



INFILL RESIDENTIAL LAKEFRONT LAND

3.76± acres

Orange County, FL



PROPERTY MAP

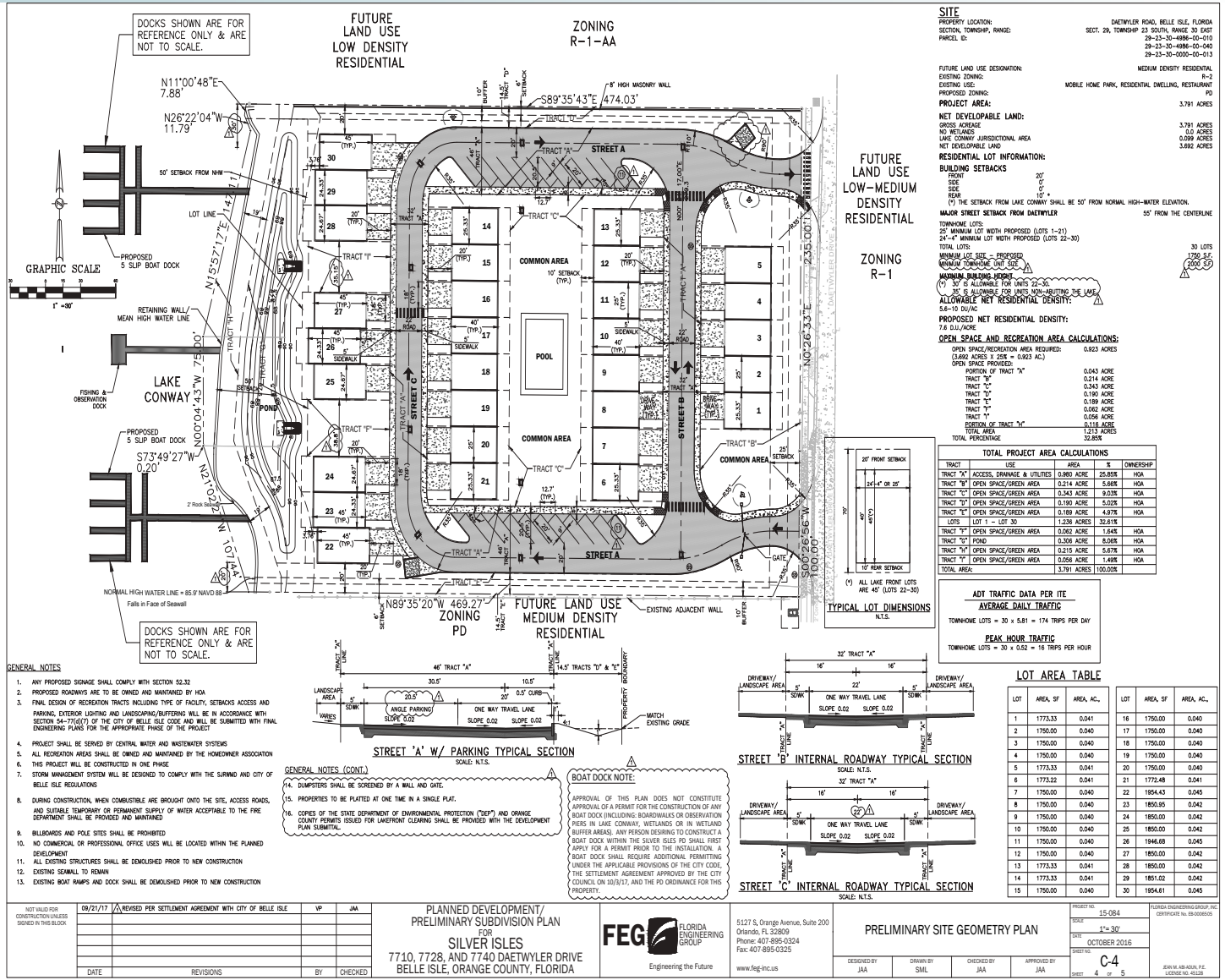
— Commercial Real Estate Investments | Management | Brokerage | Development | Land

Maury L. Carter & Associates, Inc.
407-422-3144 | www.maurycarter.com



INFILL RESIDENTIAL LAKEFRONT LAND

3.76± acres
Orange County, FL



PRELIMINARY SITE GEOMETRY PLAN

Commercial Real Estate Investments | Management | Brokerage | Development | Land

Maury L. Carter & Associates, Inc.
407-422-3144 | www.maurycarter.com



