

CLEAR CREEK FARMS

366± acres

Marion County, FL



Central Florida Haven!

This property features majestic rolling and large live oaks; along with two houses, a 16 stall horse barn, a state of the art Olive oil processing facility coupled with a 25± acre olive grove. This property is also fully integrated for a wagyu beef operation. There are concrete cattle pens, an air conditioned room for storing embryo and studying cattle, and several barns for storing equipment. Clear Creek farms is a “turn key” agricultural estate located in the heart of equestrian country just minutes from the World Equestrian Center.



CO-LISTING

Maury L. Carter & Associates, Inc.
407-422-3144 | maurycarter.com



NIGHT | PINEL

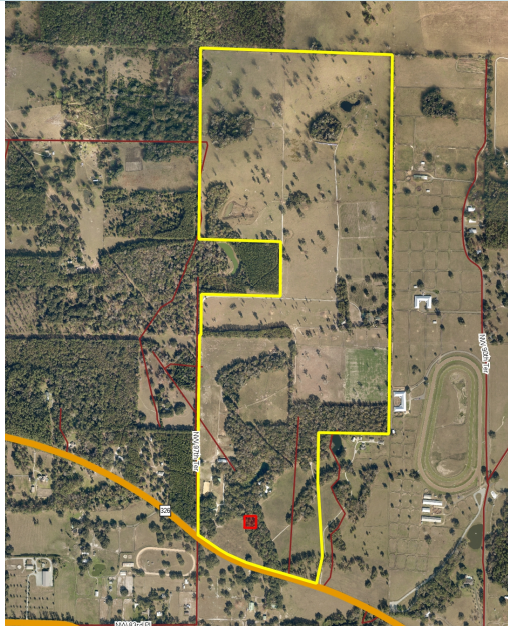
Premier | Sotheby's
INTERNATIONAL REALTY

Night-Pinel & Premier Sotheby's International Realty
407.629.4446 | night-pinel.com

CLEAR CREEK FARMS

366± acres

Marion County, FL



LOCATION

Located less than 5 miles from I-75 and less than 20 minutes to Downtown Ocala this property has great accessibility.

SIZE

366± acres

PRICE

\$11,900,000

ZONING

A-1

ROAD FRONTAGE

1,800± feet on Highway 326

DESCRIPTION

One hundred year old oak trees line the drive leading to the epitome of an “old Florida” horse farm. With elevation changes throughout, every twist and turn of the interior roads offer a new scenic view of Ocala’s majestic landscape. A 16 stall horse barn and interior cross fencing, make this property well suited for an equestrian estate. Clear Creek farms also has potential for many other revenue streams, with a 25 acre olive farm and a complete Olive oil processing facility. This farm also includes unmatched infrastructure for cattle, boasting concrete covered cattle pens and several large equipment barns. There are two residences on the property; one large 8,000 sf. estate style home, and a smaller guest house. Clear Creek farms is a diverse property situated in the heart of horse country, just a short drive from the World Equestrian Center.

Offering subject to errors, omission, prior sale or withdrawal without notice.



LAND FOR SALE



Maury L. Carter & Associates, Inc.
407-422-3144 | maurycarter.com

CO-LISTING



NIGHT | PINEL

Premier | Sotheby's
INTERNATIONAL REALTY

Night-Pinel & Premier Sotheby's International Realty
407.629.4446 | night-pinel.com

CLEAR CREEK FARMS

366± acres

Marion County, FL



CO-LISTING

Maury L. Carter & Associates, Inc.
407-422-3144 | maurycarter.com



NIGHT | PINEL

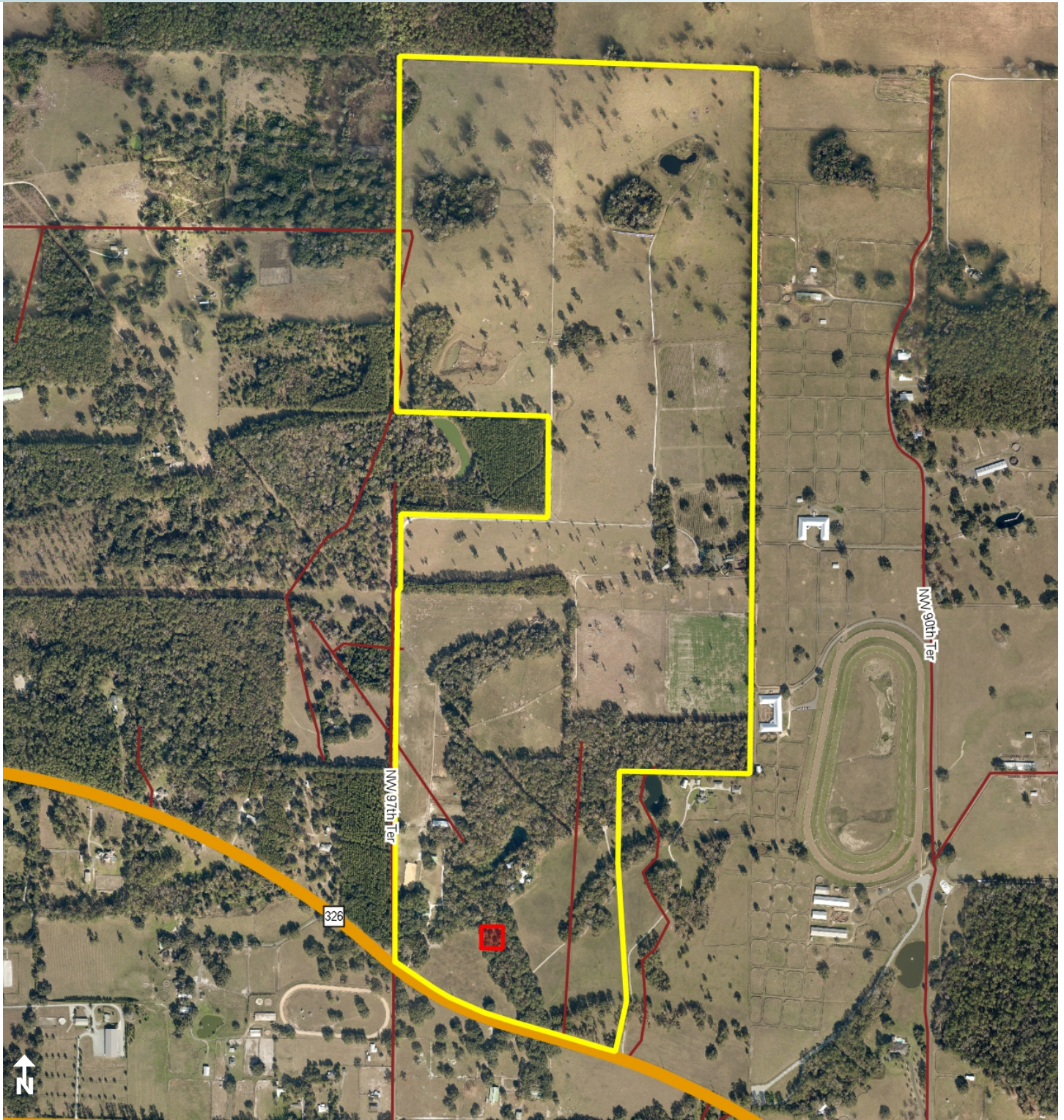
Premier | Sotheby's
INTERNATIONAL REALTY

Night-Pinel & Premier Sotheby's International Realty
407.629.4446 | night-pinel.com

CLEAR CREEK FARMS

366± acres

Marion County, FL



PROPERTY MAP



CO-LISTING

Maury L. Carter & Associates, Inc.
407-422-3144 | maurycarter.com



NIGHT | PINEL

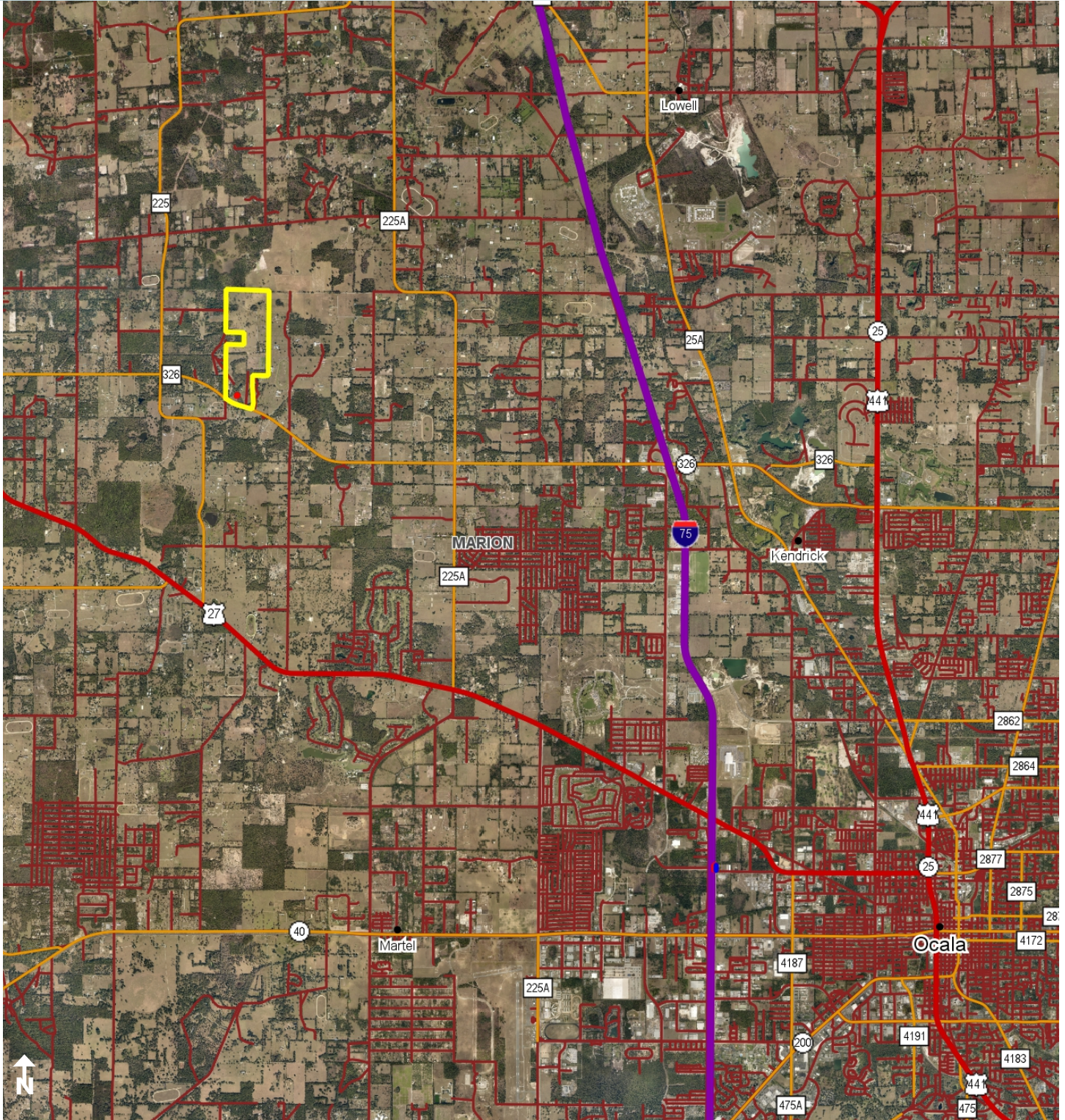
Premier | Sotheby's
INTERNATIONAL REALTY

Night-Pinel & Premier Sotheby's International Realty
407.629.4446 | night-pinel.com

CLEAR CREEK FARMS

366± acres

Marion County, FL



REGIONAL MAP



CO-LISTING

Maury L. Carter & Associates, Inc.
407-422-3144 | maurycarter.com



NIGHT | PINEL

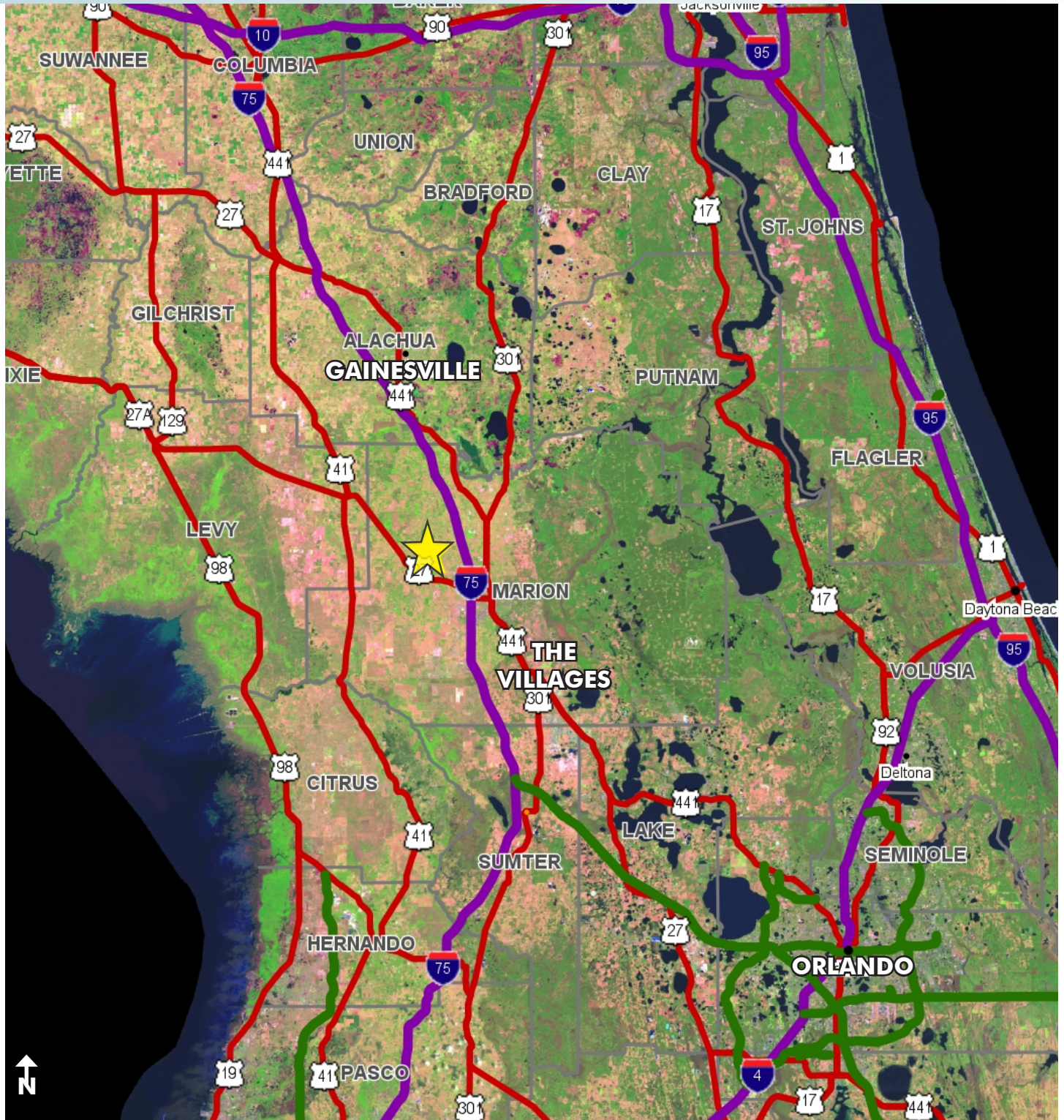
Premier Sotheby's
INTERNATIONAL REALTY

Night-Pinel & Premier Sotheby's International Realty
407.629.4446 | night-pinel.com

CLEAR CREEK FARMS

366± acres

Marion County, FL



LOCATION MAP



CO-LISTING

Maury L. Carter & Associates, Inc.
407-422-3144 | maurycarter.com



NIGHT | PINEL

Premier | Sotheby's
INTERNATIONAL REALTY

Night-Pinel & Premier Sotheby's International Realty
407.629.4446 | night-pinel.com