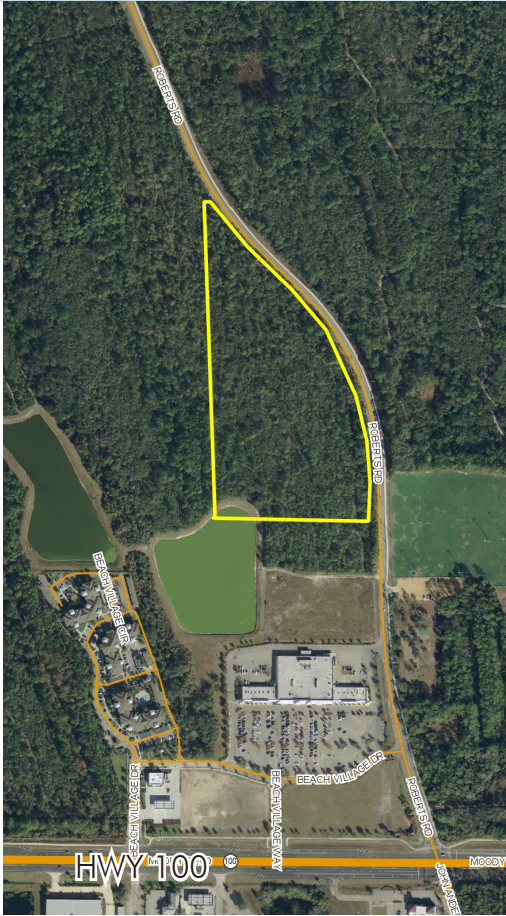


FLAGLER BEACH COASTAL MIXED-USE

15± acres

Flagler County, FL



LOCATION/DESCRIPTION

Coastal development opportunity within 5 minutes of I-95! Perfectly situated less than 3 minutes from the golden sands of Flagler Beach and its ever-expanding offering of river and ocean view restaurants, this is the last treasure along the Flagler and Volusia Coast. A dozen golf courses are within 15 minutes of the project and for the boater, there are numerous marinas and the Intracoastal Waterway less than a mile away. Beach Village is within walking distance to a new Publix shopping center and the project offers utilities allowing for a mix of multi-family and commercial.

SIZE

15± acres

PRICE

\$900,000 (\$60,000/acre)

ZONING

PUD (Mixed-Use - Commercial and multi-family)

ROAD FRONTAGE

1,600' ± on Roberts Road

UTILITIES

City of Palm Coast and City of Flagler Beach

PARCEL IDs

11-12-31-0650-000A0-0071 - 15.71 acres

Offering subject to errors, omission, prior sale or withdrawal without notice.

LAND FOR SALE

— Commercial Real Estate Investments | Management | Brokerage | Development | Land

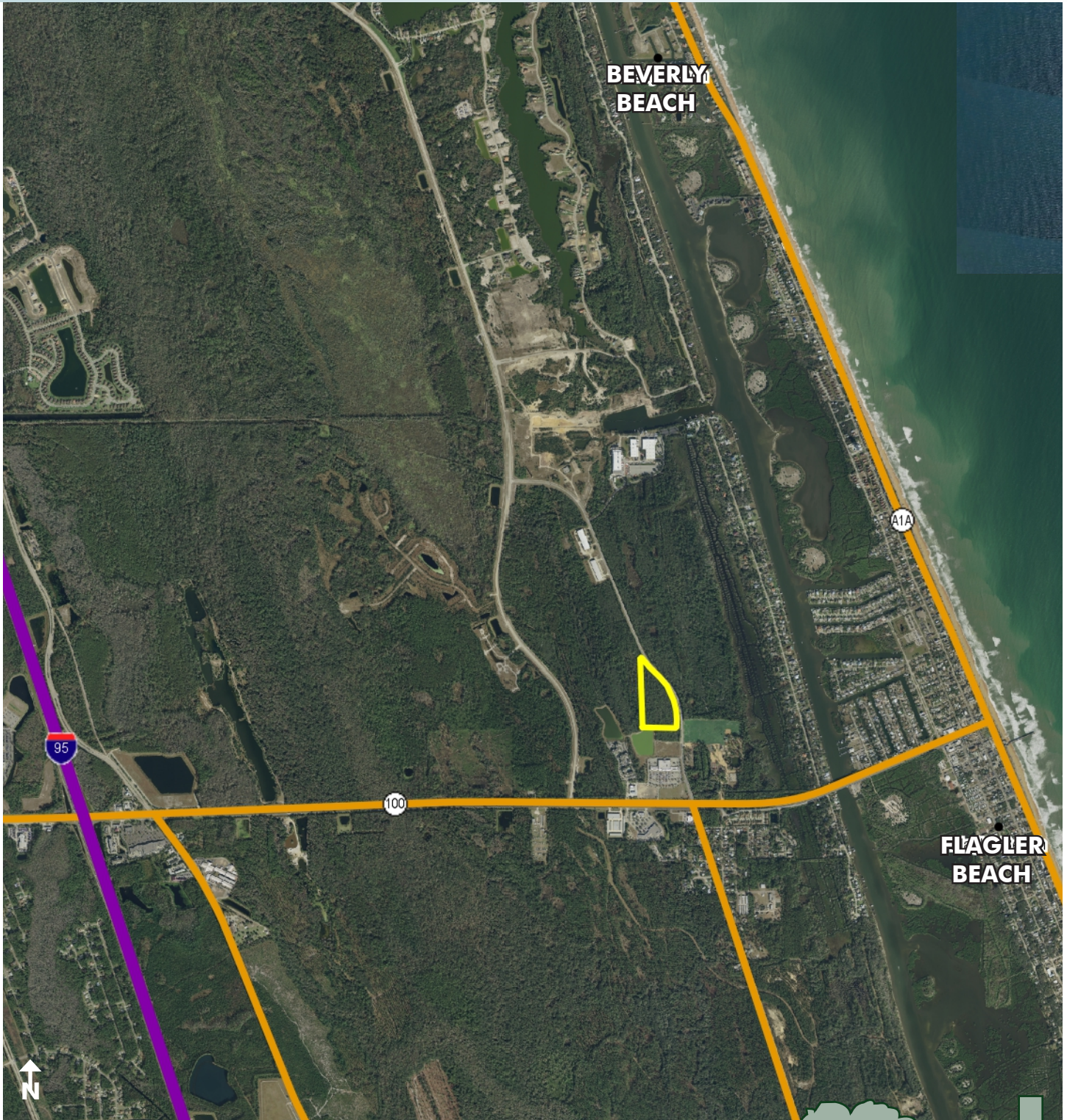
Maury L. Carter & Associates, Inc.
407-422-3144 | www.maurycarter.com



FLAGLER BEACH COASTAL MIXED-USE

15± acres

Flagler County, FL



LOCATION MAP

— Commercial Real Estate Investments | Management | Brokerage | Development | Land

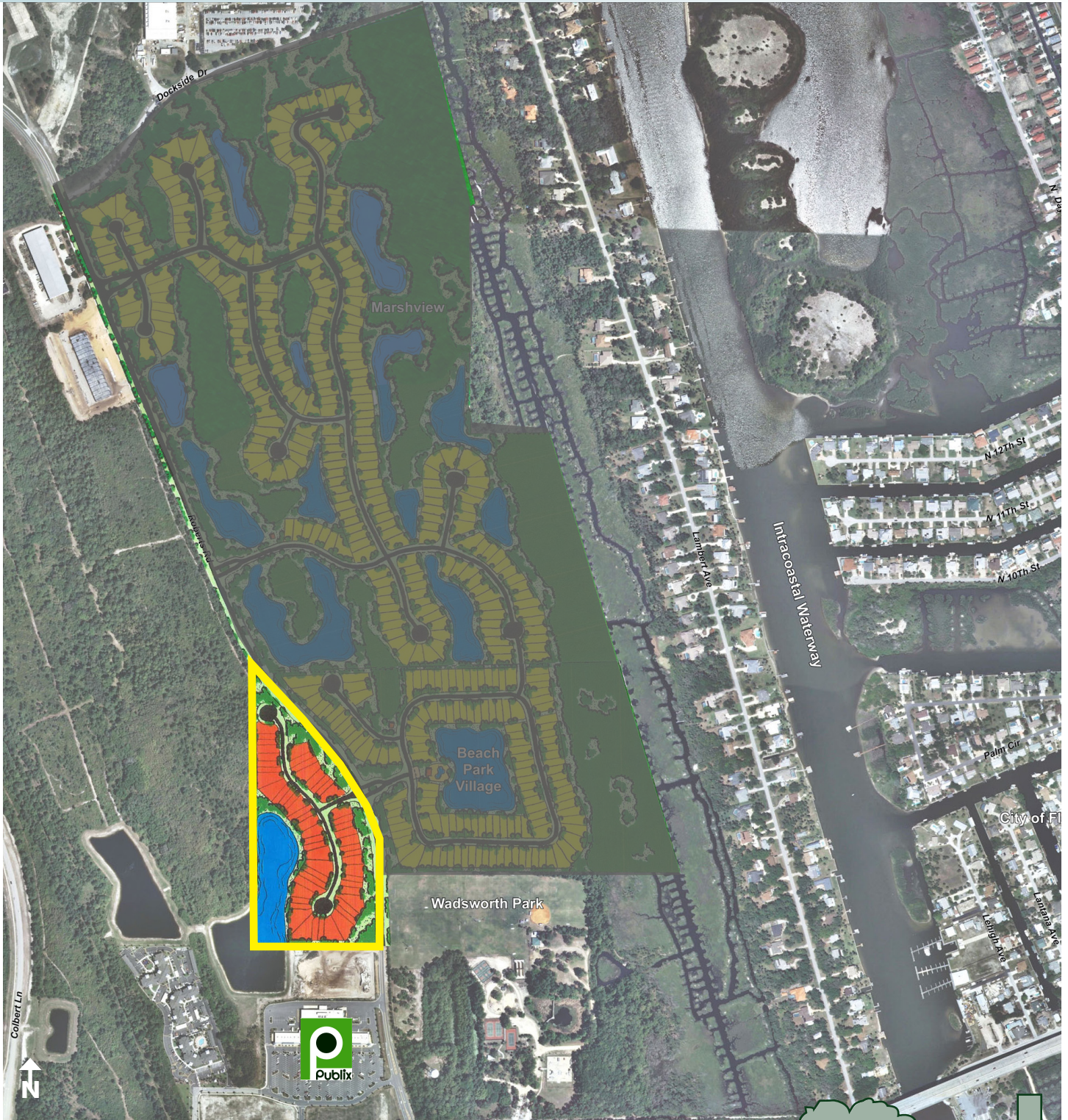
Maury L. Carter & Associates, Inc.
407-422-3144 | www.maurycarter.com



FLAGLER BEACH COASTAL MIXED-USE

15± acres

Flagler County, FL



COMPREHENSIVE PLAN

Commercial Real Estate Investments | Management | Brokerage | Development | Land

Maury L. Carter & Associates, Inc.

407-422-3144 | www.maurycarter.com

