

**FOR
SALE**

SOUTH ORLANDO COMMERCIAL BUILDING

5515 S Orange Ave, Orlando, FL 32809



ABOUT THE PROPERTY

SIZE .30± acres

PRICE \$699,000

ZONING ECD: Light Commercial

FLU Commercial

UTILITIES Water, sewer, electric

ROAD FRONTAGE 70'± on S Orange Ave

PARCEL ID 29-23-24-7332-00-050

DESCRIPTION

Great location with pre-existing improvements!

Just 5 miles south of Downtown Orlando with 70 feet of frontage on Orange Ave. Property includes an existing 5,814 SF building. Approximately .30 acre with a great deal of potential for commercial use.

Just minutes to Orlando International Airport, SR 528 and theme park areas!

Call for a showing today!

MAURY L. CARTER & ASSOCIATES, INC.

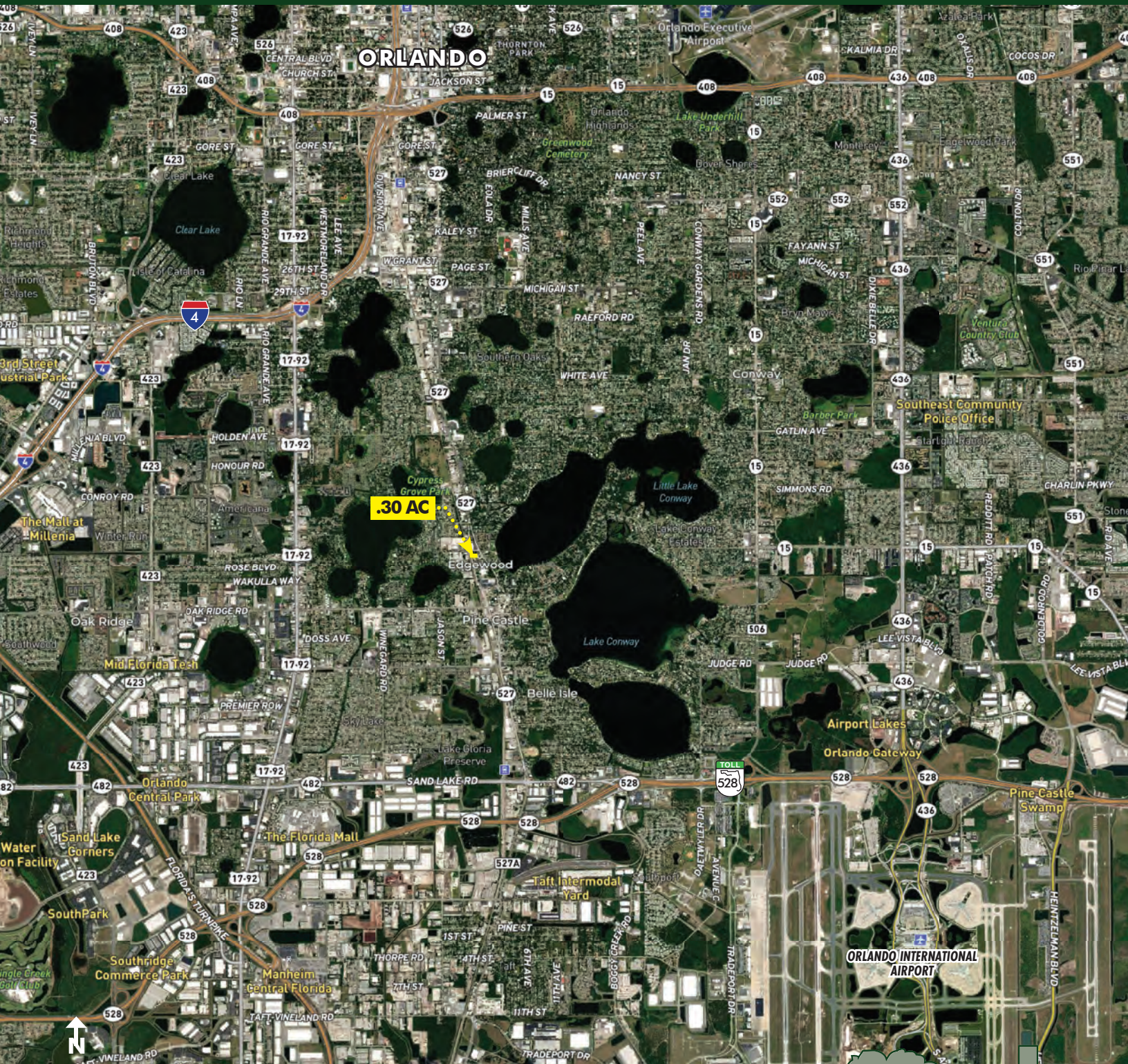
Licensed Real Estate Brokers | www.maurycarter.com | 407-422-3144



**FOR
SALE**

SOUTH ORLANDO COMMERCIAL BUILDING

5515 S Orange Ave, Orlando, FL 32809



REGIONAL MAP

MAURY L. CARTER & ASSOCIATES, INC.

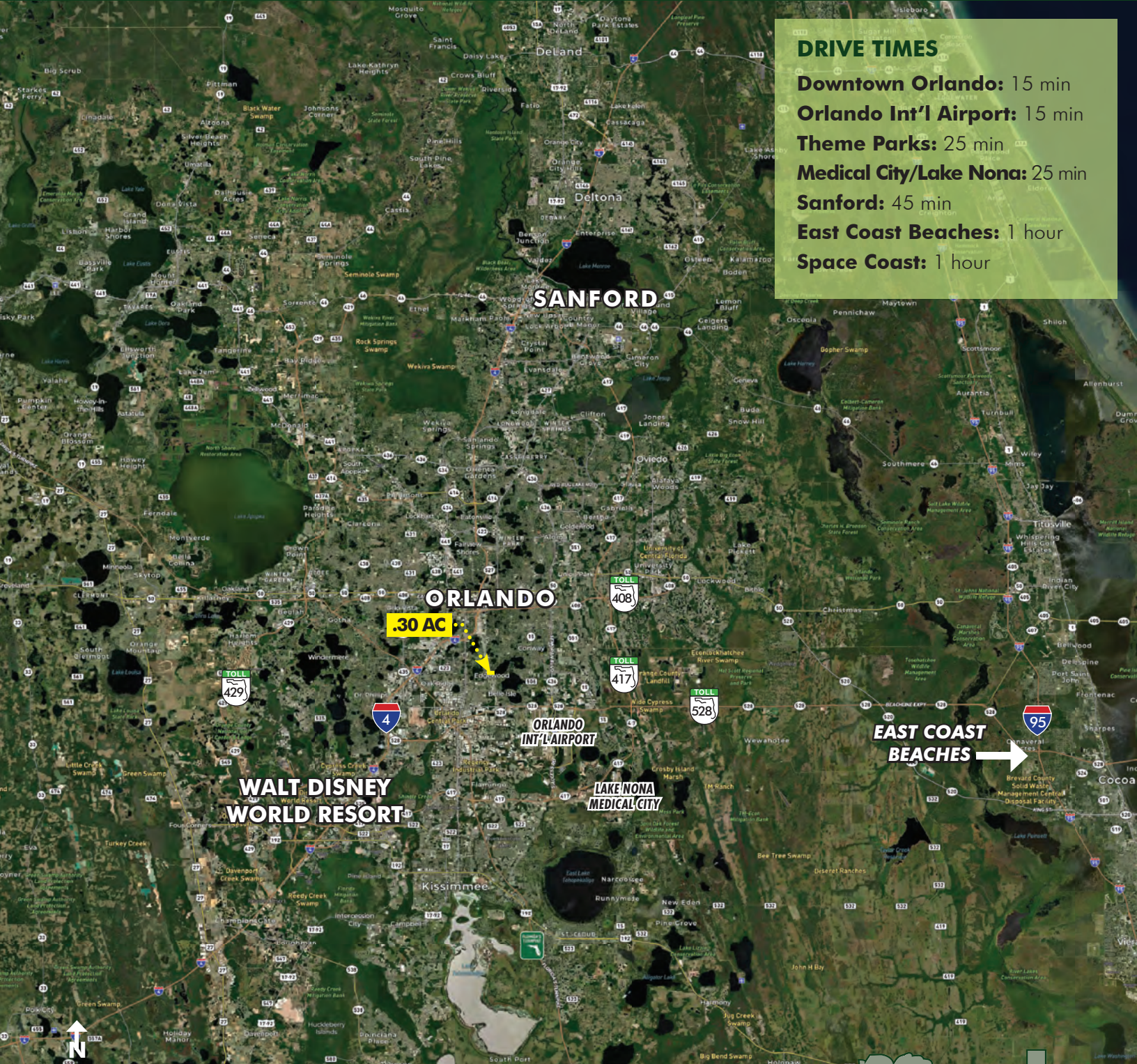
Licensed Real Estate Brokers | www.maurycarter.com | 407-422-3144



**FOR
SALE**

SOUTH ORLANDO COMMERCIAL BUILDING

5515 S Orange Ave, Orlando, FL 32809



DRIVE TIMES

- Downtown Orlando:** 15 min
- Orlando Int'l Airport:** 15 min
- Theme Parks:** 25 min
- Medical City/Lake Nona:** 25 min
- Sanford:** 45 min
- East Coast Beaches:** 1 hour
- Space Coast:** 1 hour

.30 AC

LOCATION MAP

MAURY L. CARTER & ASSOCIATES, INC.

Licensed Real Estate Brokers | www.maurycarter.com | 407-422-3144



**FOR
SALE**

SOUTH ORLANDO COMMERCIAL BUILDING

5515 S Orange Ave, Orlando, FL 32809



MAURY L. CARTER & ASSOCIATES, INC.

Licensed Real Estate Brokers | www.maurycarter.com | 407-422-3144

