

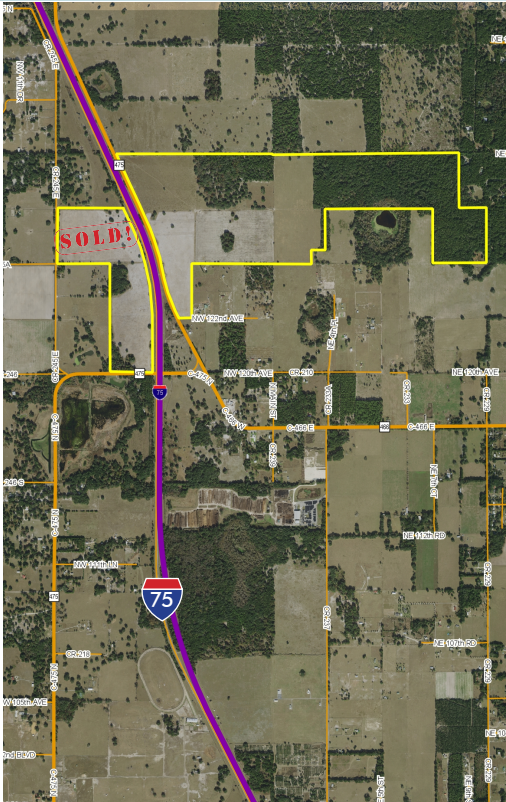
INTERSTATE 75

428± acres

Sumter County, FL

**PORTION
SOLD!**

LAND FOR SALE



LOCATION

Property is located north of County Road 466, four miles west of The Villages. It is bisected by Interstate 75 and County Road 475.

PORTION SOLD

116± acres sold, see map for details

SIZE/PRICE

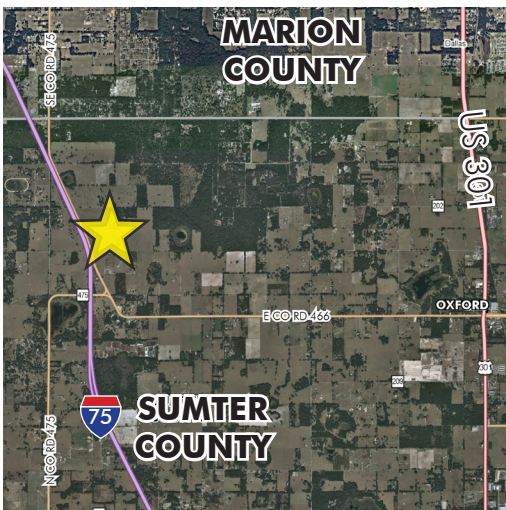
428± acres remaining / available. Seller may consider dividing
\$10,700,000 or \$25,000/acre

ZONING

Agricultural – 1 unit per 5 acres / 66.5± acres
Commercial fronting County Road 475.

ROAD FRONTAGE

3,545' ± on CR 475 (east of I-75)
306' ± on north side of NW 122nd Avenue



UTILITIES

Septic and well.

Offering subject to errors, omission, prior sale or withdrawal without notice.

— Commercial Real Estate Investments | Management | Brokerage | Development | Land

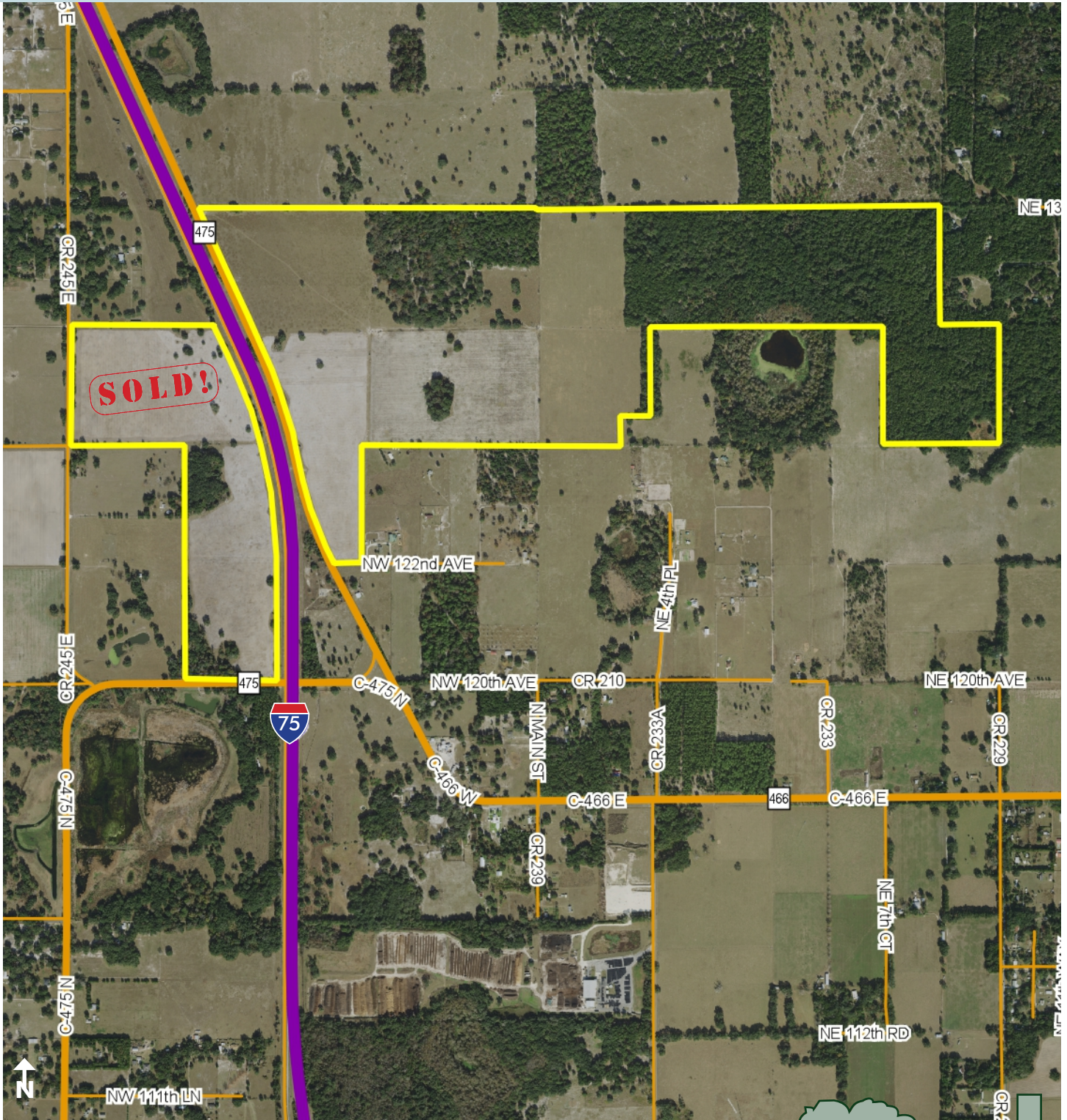
Maury L. Carter & Associates, Inc.
407-422-3144 | www.maurycarter.com



INTERSTATE 75

428± acres

Sumter County, FL



PROPERTY MAP

— Commercial Real Estate Investments | Management | Brokerage | Development | Land

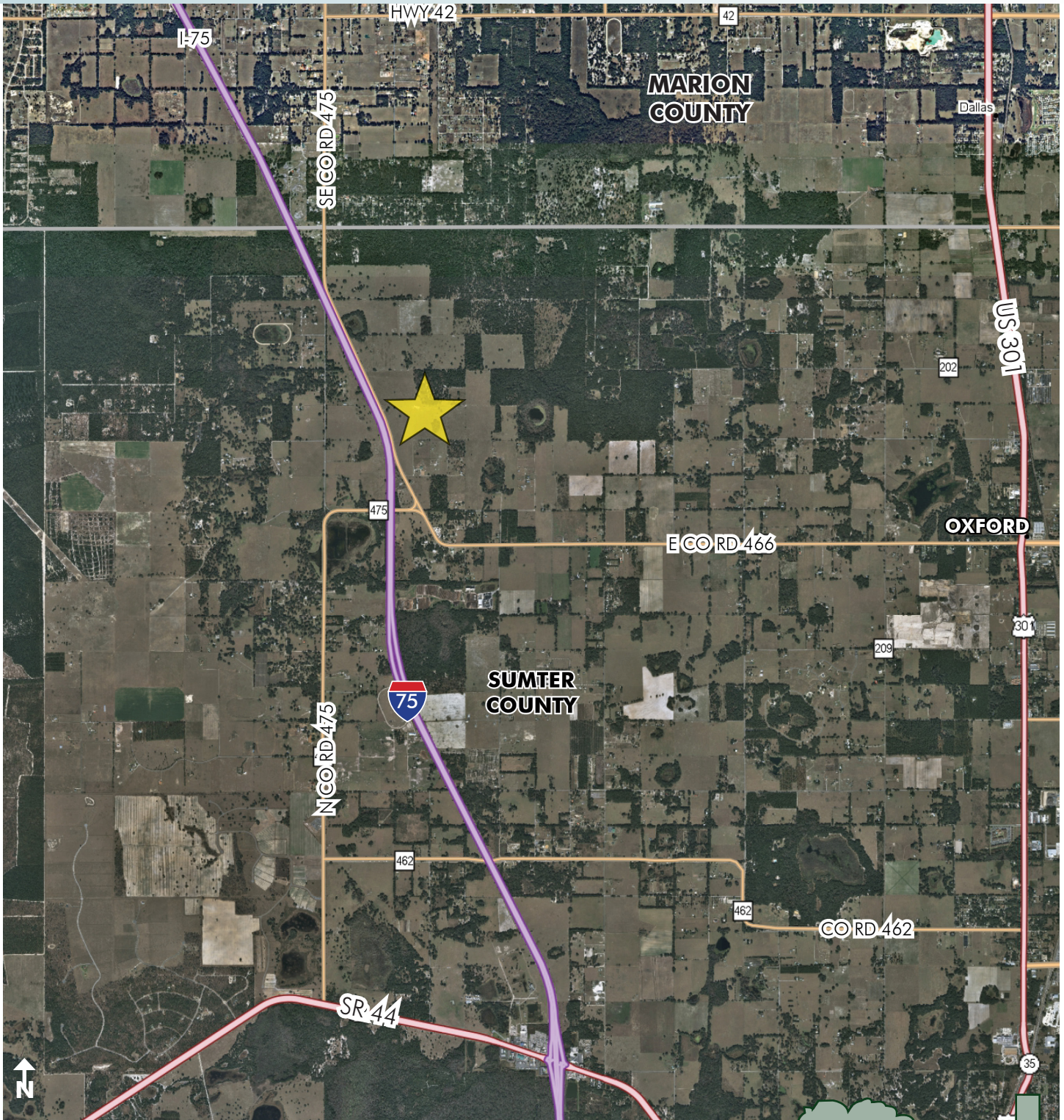
Maury L. Carter & Associates, Inc.
407-422-3144 | www.maurycarter.com



INTERSTATE 75

428± acres

Sumter County, FL



LOCATION MAP

— Commercial Real Estate Investments | Management | Brokerage | Development | Land

Maury L. Carter & Associates, Inc.
407-422-3144 | www.maurycarter.com

