

**FOR  
LEASE**

# DOWNTOWN DELAND OFFICE SPACE

131 E New York Ave, DeLand, FL 32724



## ABOUT THE PROPERTY

**SIZE** 1,000 - 2,200± sf available for lease

**PRICE** \$17 psf NNN

**ZONING** C-2AH

**FLU** Downtown Commercial

**UTILITIES** Available to the site

**ROAD FRONTAGE** 215'± on E New York Ave

**PARCEL ID** 700901040012

## DESCRIPTION

**Unique opportunity to lease office space in Downtown DeLand!**

This property offers ample parking with easy access to shopping, restaurants and many other amenities that downtown DeLand has to offer! Office space available on the third floor.

**Call for more information today!**



**MAURY L. CARTER & ASSOCIATES, INC.**

Licensed Real Estate Brokers | [www.maurycarter.com](http://www.maurycarter.com) | 407-422-3144

Offering subject to errors, omission, prior sale or withdrawal without notice.

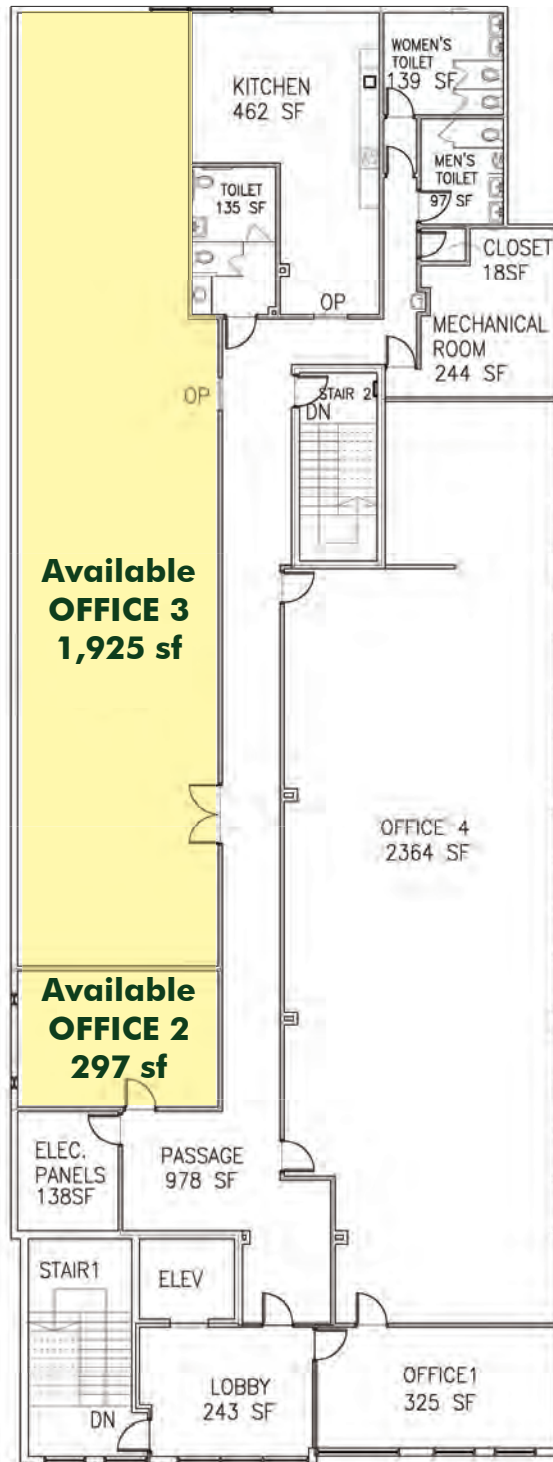


Maury L. Carter & Associates, Inc.<sup>TM</sup>  
Licensed Real Estate Broker

**FOR  
LEASE**

# DOWNTOWN DELAND OFFICE SPACE

131 E New York Ave, DeLand, FL 32724



## FLOOR PLAN

**MAURY L. CARTER & ASSOCIATES, INC.**

Licensed Real Estate Brokers | [www.maurycarter.com](http://www.maurycarter.com) | 407-422-3144

Offering subject to errors, omission, prior sale or withdrawal without notice.



**FOR  
LEASE**

# **DOWNTOWN DELAND OFFICE SPACE**

131 E New York Ave, DeLand, FL 32724



**MAURY L. CARTER & ASSOCIATES, INC.**

Licensed Real Estate Brokers | [www.maurycarter.com](http://www.maurycarter.com) | 407-422-3144

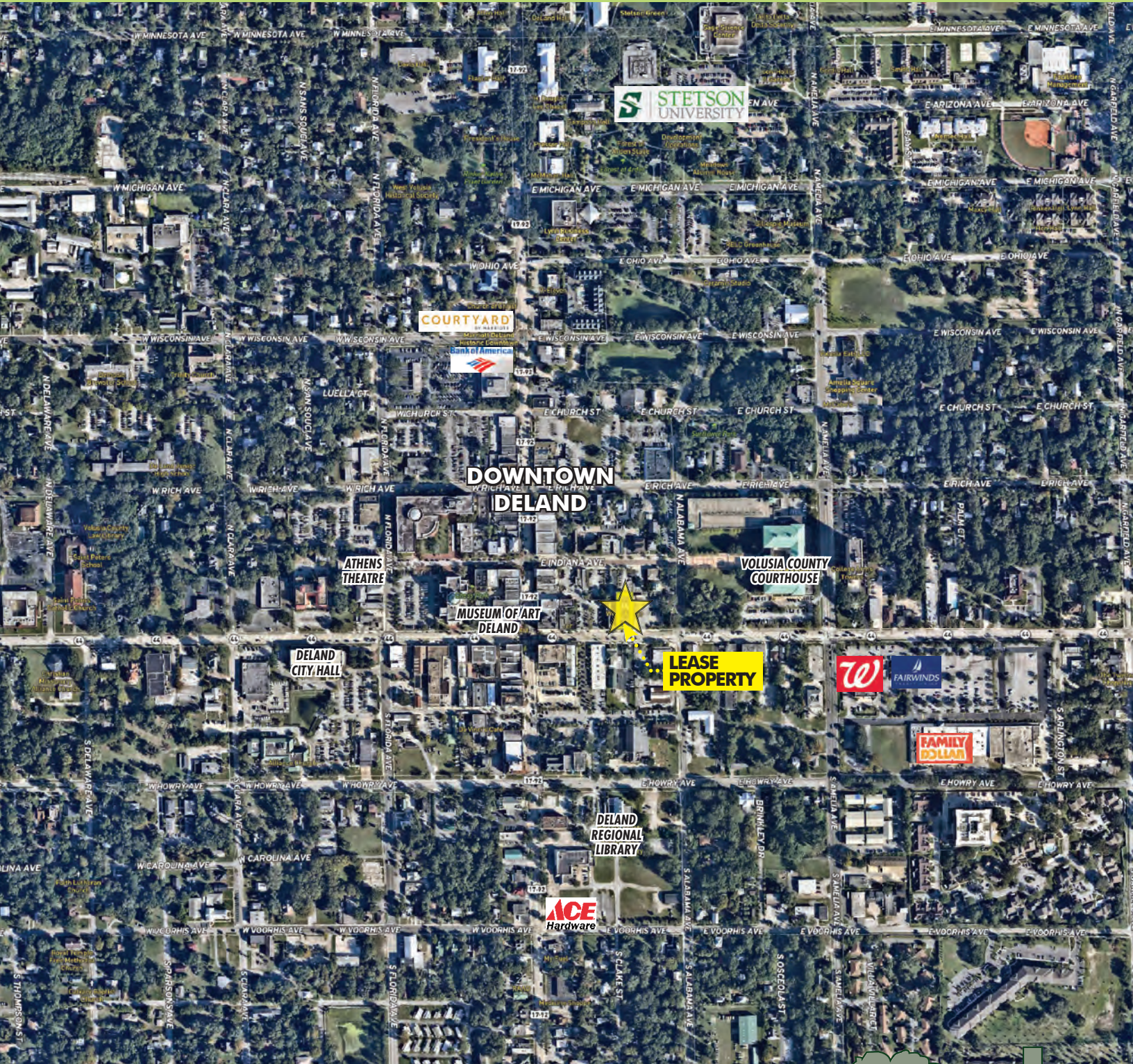
Offering subject to errors, omission, prior sale or withdrawal without notice.



**FOR  
LEASE**

# DOWNTOWN DELAND OFFICE SPACE

131 E New York Ave, DeLand, FL 32724



## REGIONAL MAP

**MAURY L. CARTER & ASSOCIATES, INC.**

Licensed Real Estate Brokers | [www.maurycarter.com](http://www.maurycarter.com) | 407-422-3144

Offering subject to errors, omission, prior sale or withdrawal without notice.



**FOR  
LEASE**

# DOWNTOWN DELAND OFFICE SPACE

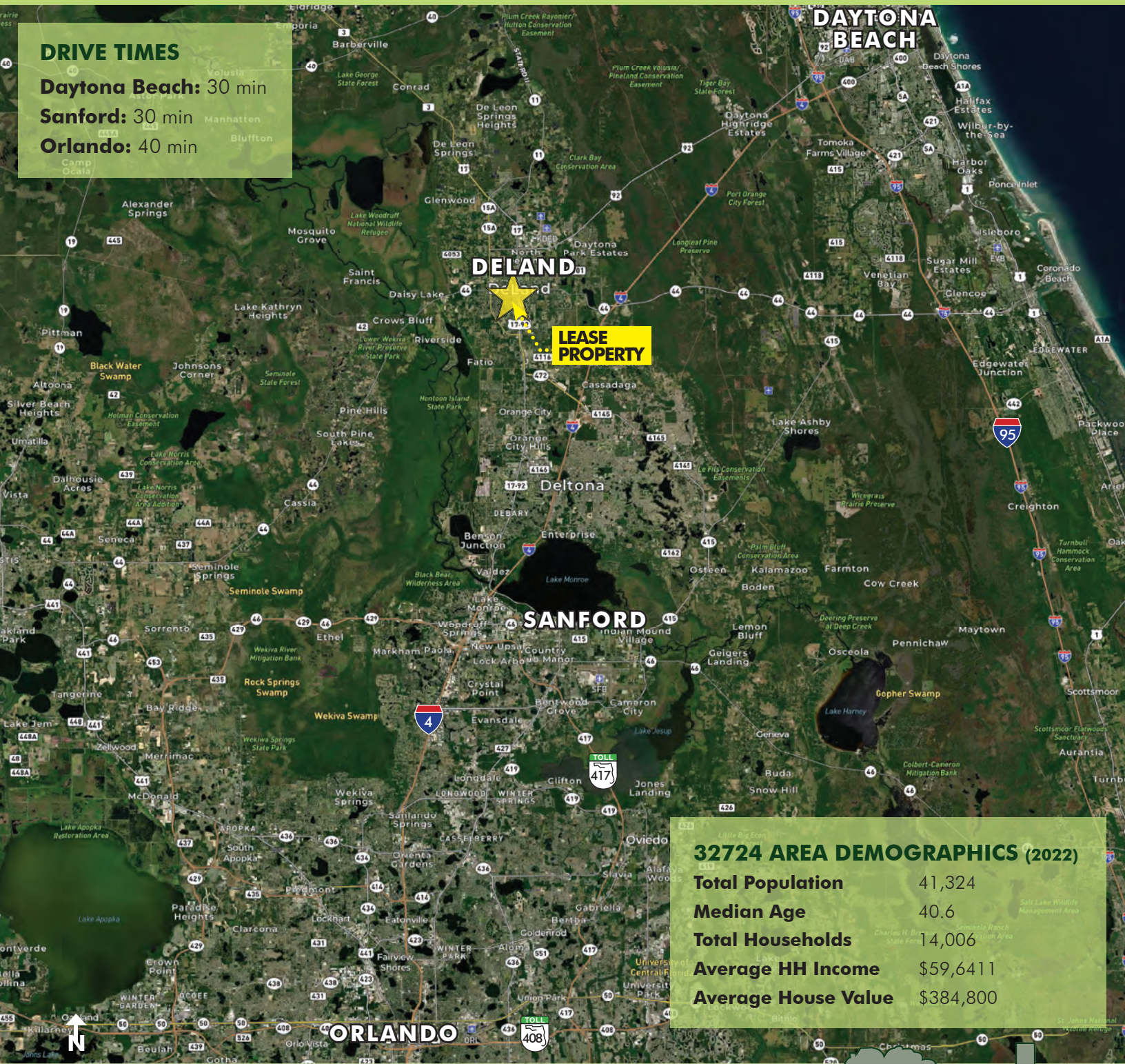
131 E New York Ave, DeLand, FL 32724

## DRIVE TIMES

**Daytona Beach:** 30 min

**Sanford:** 30 min

**Orlando:** 40 min



**DELAND**

**LEASE PROPERTY**

**DAYTONA  
BEACH**

**SANFORD**

**ORLANDO**

## 32724 AREA DEMOGRAPHICS (2022)

<b>Total Population</b>	41,324
<b>Median Age</b>	40.6
<b>Total Households</b>	14,006
<b>Average HH Income</b>	\$59,611
<b>Average House Value</b>	\$384,800

## LOCATION MAP

# MAURY L. CARTER & ASSOCIATES, INC.

Licensed Real Estate Brokers | [www.maurycarter.com](http://www.maurycarter.com) | 407-422-3144

Offering subject to errors, omission, prior sale or withdrawal without notice.



Maury L. Carter & Associates, Inc.  
Licensed Real Estate Broker