

**FOR
SALE**

ST. JOHNS RIVER POINT

DeBary, FL 32713



ABOUT THE PROPERTY

SIZE 90.47± acres

UTILITIES Water, sewer, electric nearby

RIVER FRONTAGE 4,800'± on St. Johns River

PARCEL ID 893600000010

DESCRIPTION

Build your dream St. Johns River Estate!

This prime 90± acre property is a tranquil point on the beautiful St. Johns River, situated between Lake Berseford and Lake Monroe. Great location for conservation and mitigation.

This unique property is adjacent to nearby development Riviera Bella, 306-acre community with 700+ homesites.

Call for more information today!

MAURY L. CARTER & ASSOCIATES, INC.

Licensed Real Estate Brokers | www.maurycarter.com | 407-422-3144

Offering subject to errors, omission, prior sale or withdrawal without notice.



**FOR
SALE**

ST. JOHNS RIVER POINT

DeBary, FL 32713



MAURY L. CARTER & ASSOCIATES, INC.

Licensed Real Estate Brokers | www.maurycarter.com | 407-422-3144

Offering subject to errors, omission, prior sale or withdrawal without notice.



**FOR
SALE**

ST. JOHNS RIVER POINT

DeBary, FL 32713



MAURY L. CARTER & ASSOCIATES, INC.

Licensed Real Estate Brokers | www.maurycarter.com | 407-422-3144

Offering subject to errors, omission, prior sale or withdrawal without notice.



Maury L. Carter & Associates, Inc.SM
Licensed Real Estate Broker

**FOR
SALE**

ST. JOHNS RIVER POINT

DeBary, FL 32713



MAURY L. CARTER & ASSOCIATES, INC.

Licensed Real Estate Brokers | www.maurycarter.com | 407-422-3144

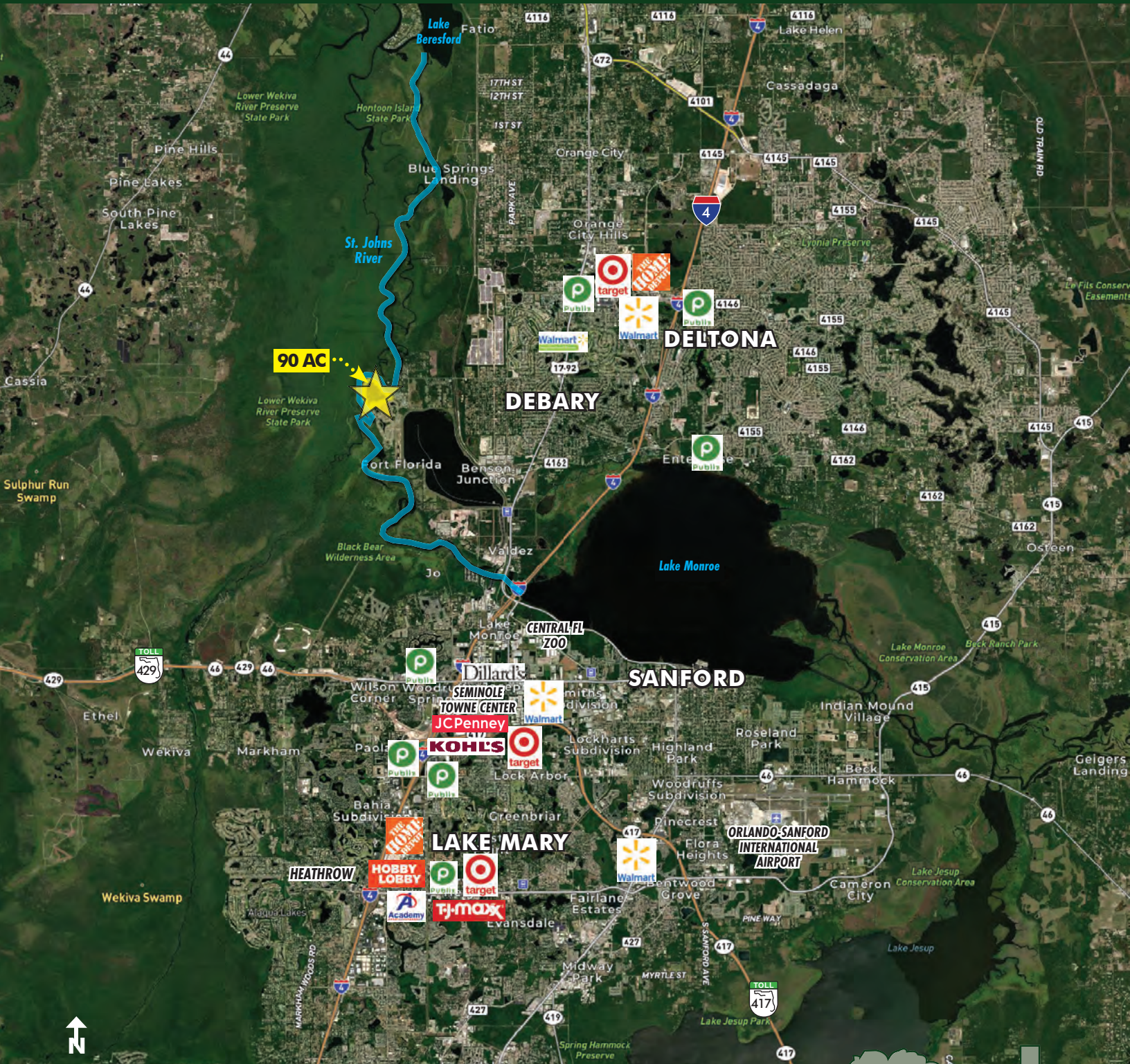
Offering subject to errors, omission, prior sale or withdrawal without notice.



**FOR
SALE**

ST. JOHNS RIVER POINT

DeBary, FL 32713



REGIONAL MAP

MAURY L. CARTER & ASSOCIATES, INC.

Licensed Real Estate Brokers | www.maurycarter.com | 407-422-3144

Offering subject to errors, omission, prior sale or withdrawal without notice.



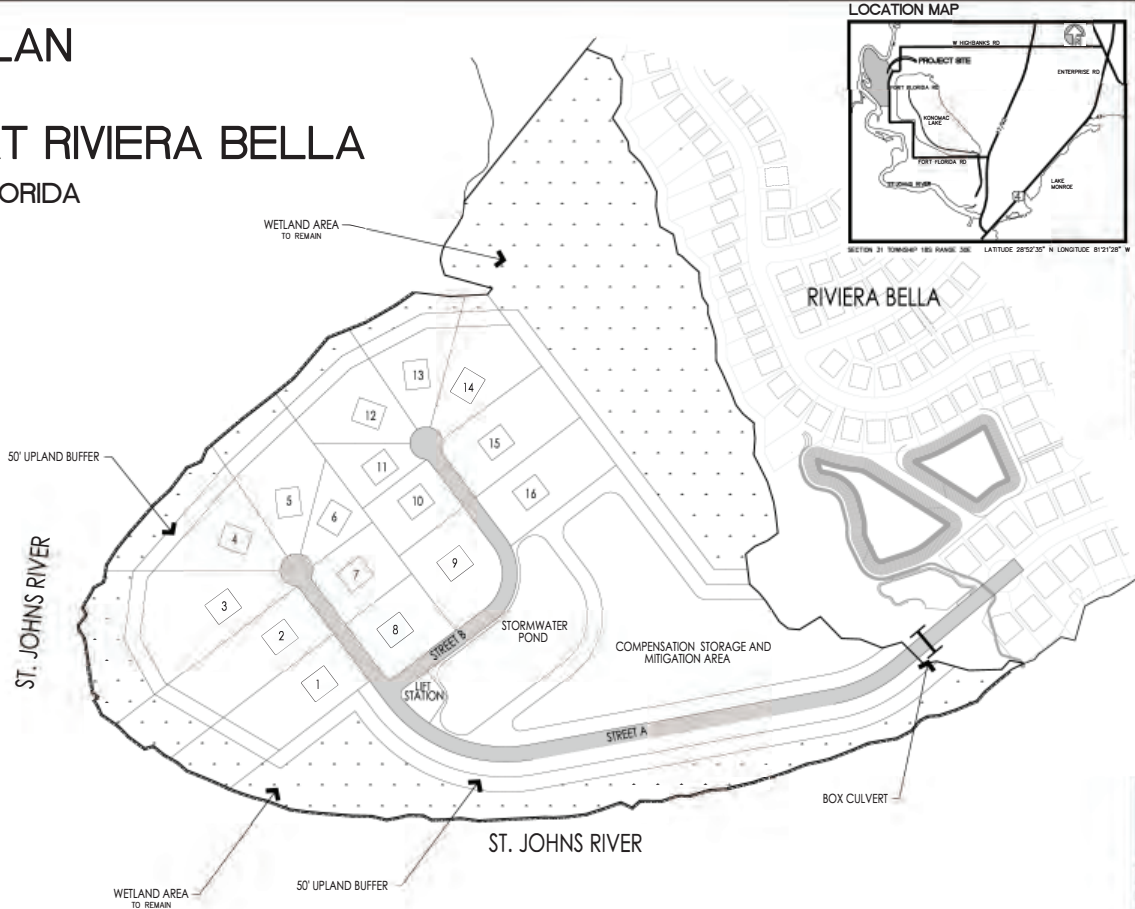
Maury L. Carter & Associates, Inc.
Licensed Real Estate Broker

**FOR
SALE**

ST. JOHNS RIVER POINT

DeBary, FL 32713

CONCEPT PLAN FOR THE POINT AT RIVIERA BELLA CITY OF DEBARY, FLORIDA



PROJECT NO.	
DATE	
SCALE	
DESIGNED BY	
DRAWN BY	
CHECKED BY	
DATE	
SHEET	1
NOT FOR CONSTRUCTION UNLESS SIGNED AND SEALED	
B&S ENGINEERING & ARCHITECTURE, LLC 2221 Lee Road, Ste. 17 Winter Park, FL 32789 (407) 939-0300 bbs@bbseng.com Board of Professional Engineers Certificate No. 28555	
JOB NO.: HC-001-03	
DESIGNED BY: ES	
DRAWN BY: ES	
APPROVED BY: ES	
DATE: 03.20.13	
SHEET: 1	
SCALE: AS SHOWN	
NOT FOR CONSTRUCTION UNLESS SIGNED AND SEALED	
BARRY LEE SMITH, P.E. REGISTRATION NO. 75249	
DATE:	

CONCEPT PLAN

MAURY L. CARTER & ASSOCIATES, INC.

Licensed Real Estate Brokers | www.maurycarter.com | 407-422-3144

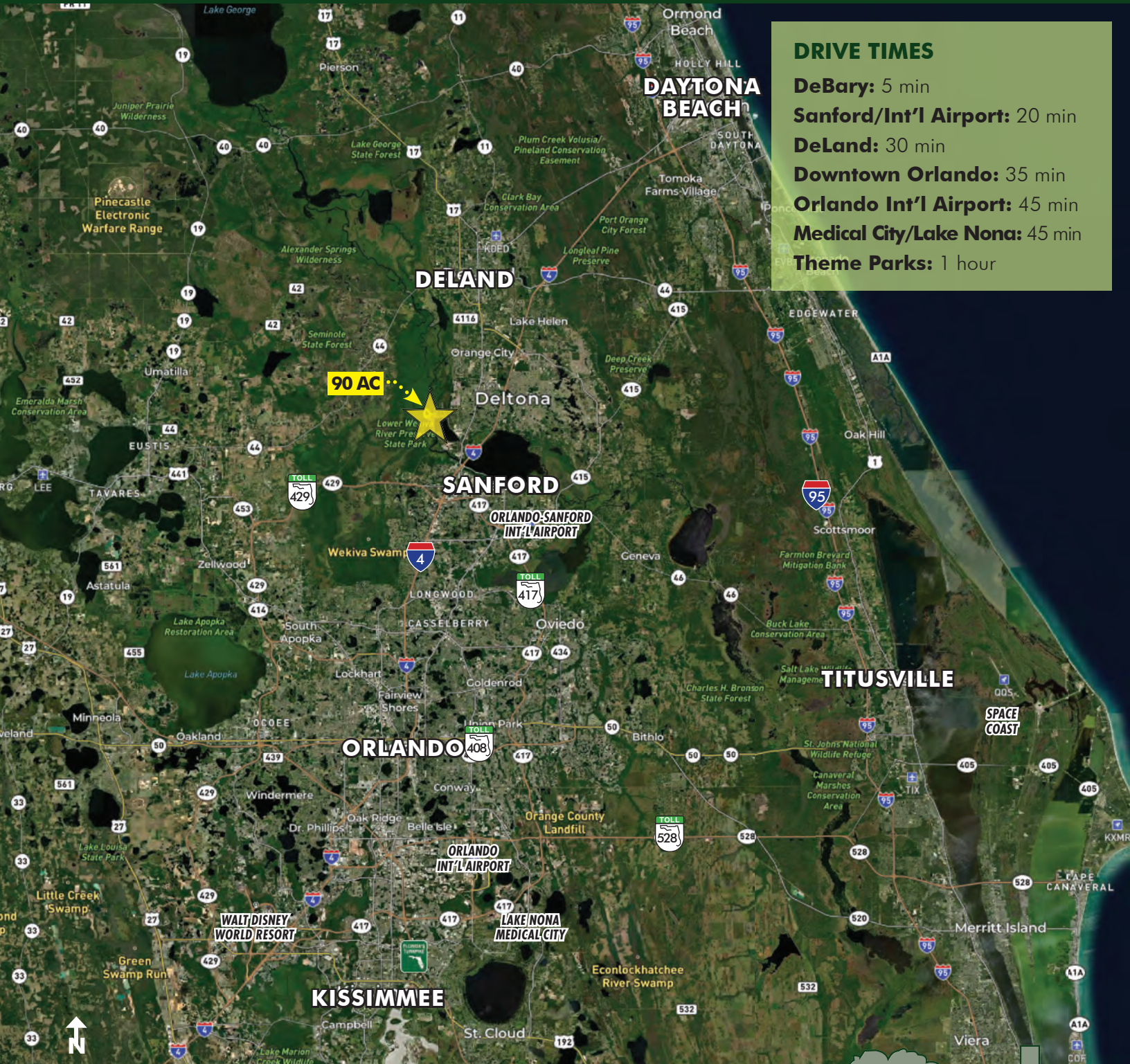
Offering subject to errors, omission, prior sale or withdrawal without notice.



**FOR
SALE**

ST. JOHNS RIVER POINT

DeBary, FL 32713



DRIVE TIMES

- DeBary:** 5 min
- Sanford/Int'l Airport:** 20 min
- DeLand:** 30 min
- Downtown Orlando:** 35 min
- Orlando Int'l Airport:** 45 min
- Medical City/Lake Nona:** 45 min
- Theme Parks:** 1 hour

LOCATION MAP

MAURY L. CARTER & ASSOCIATES, INC.

Licensed Real Estate Brokers | www.maurycarter.com | 407-422-3144

Offering subject to errors, omission, prior sale or withdrawal without notice.

