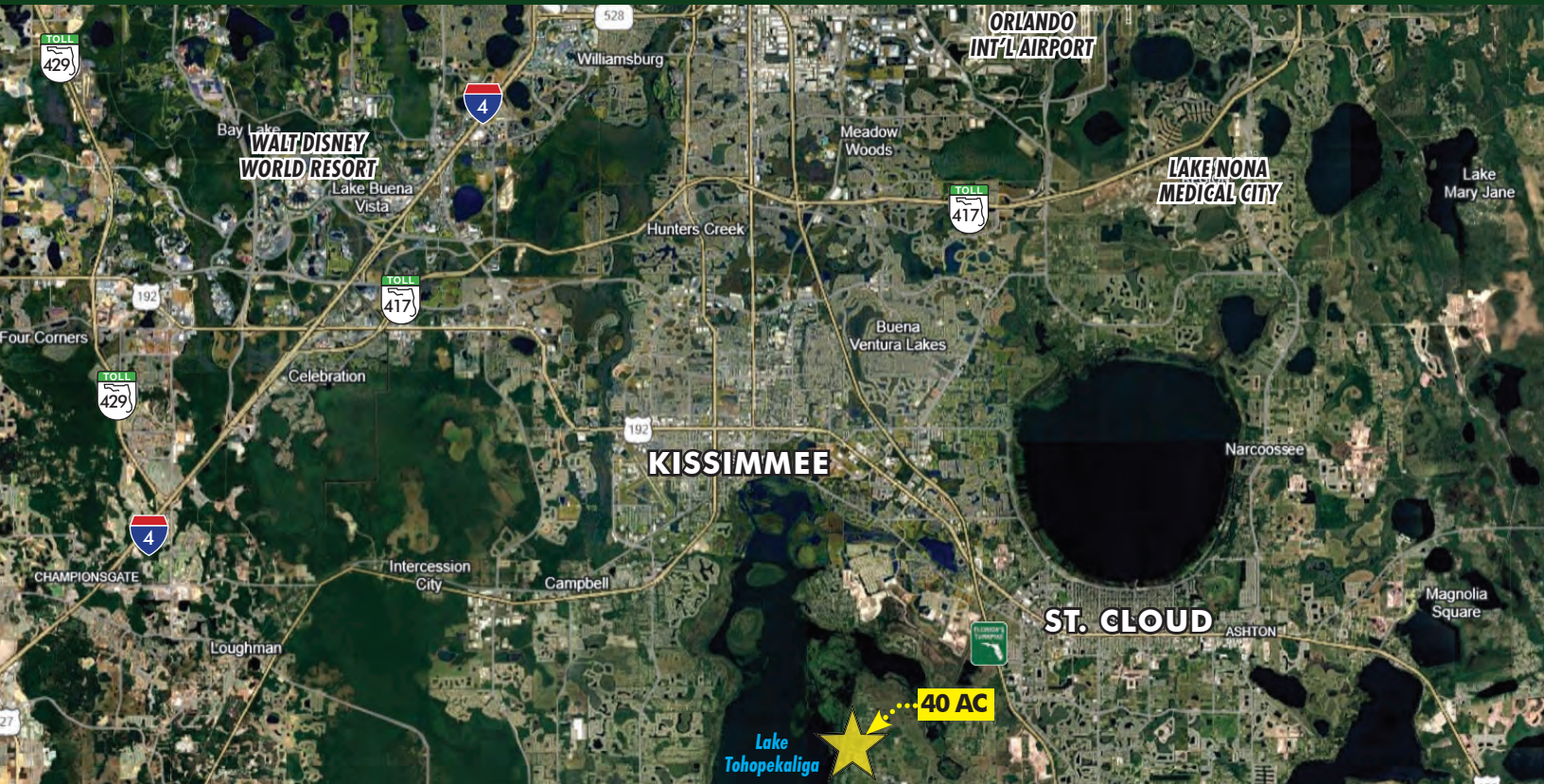


**FOR
SALE**

32± ACRE WINTER HAVEN INFILL DEVELOPMENT PROPERTY (POLK COUNTY)

1810-1820 Overlook Dr, Winter Haven, FL 33884



ABOUT THE PROPERTY

SIZE 40.17± acres

PRICE \$10,000,000

ZONING E-1

FLU LDR/Low Density Residential
Allows for 3-8 units/acre

UTILITIES Electric - OUC

ROAD FRONTAGE 1,310'± on Cherokee Rd

PARCEL IDs 24-26-29-3670-0014-0050
24-26-29-3670-0014-0010

DESCRIPTION

40 acres with 1,300 feet of frontage on Lake Tohopekaliga. **One of the last properties this size available on the Kissimmee River Chain.**

- » Permitted 2 story dock
- » Property is cleared and is currently used for cattle
- » Adjacent to Edgewater West and in close proximity to Hawk Platt, Bella Tera, Fontana and Green Island master planned developments
- » 1/2 mile to Cherokee Point Conservation Area
- » 5 mile to the Florida Turnpike interchange

Call for more information today!

Clyde Wells

Executive Vice President
407-361-1927
CWells@maurycarter.com

Joe Skinner

Vice President
386-747-3618
JSkinner@maurycarter.com

Conrad M. Carter

Sales Associate
407-456-3396
CCarter@maurycarter.com

MAURY L. CARTER & ASSOCIATES, INC.

Licensed Real Estate Brokers | www.maurycarter.com | 407-422-3144

Offering subject to errors, omission, prior sale or withdrawal without notice.



**FOR
SALE**

PRIME 40 ACRES ON LAKE TOHO

Cherokee Rd, St. Cloud, FL 32772



Lake
Tohopekaliga

EDGEWATER
WEST

40 AC



REGIONAL MAP

MAURY L. CARTER & ASSOCIATES, INC.

Licensed Real Estate Brokers | www.maurycarter.com | 407-422-3144

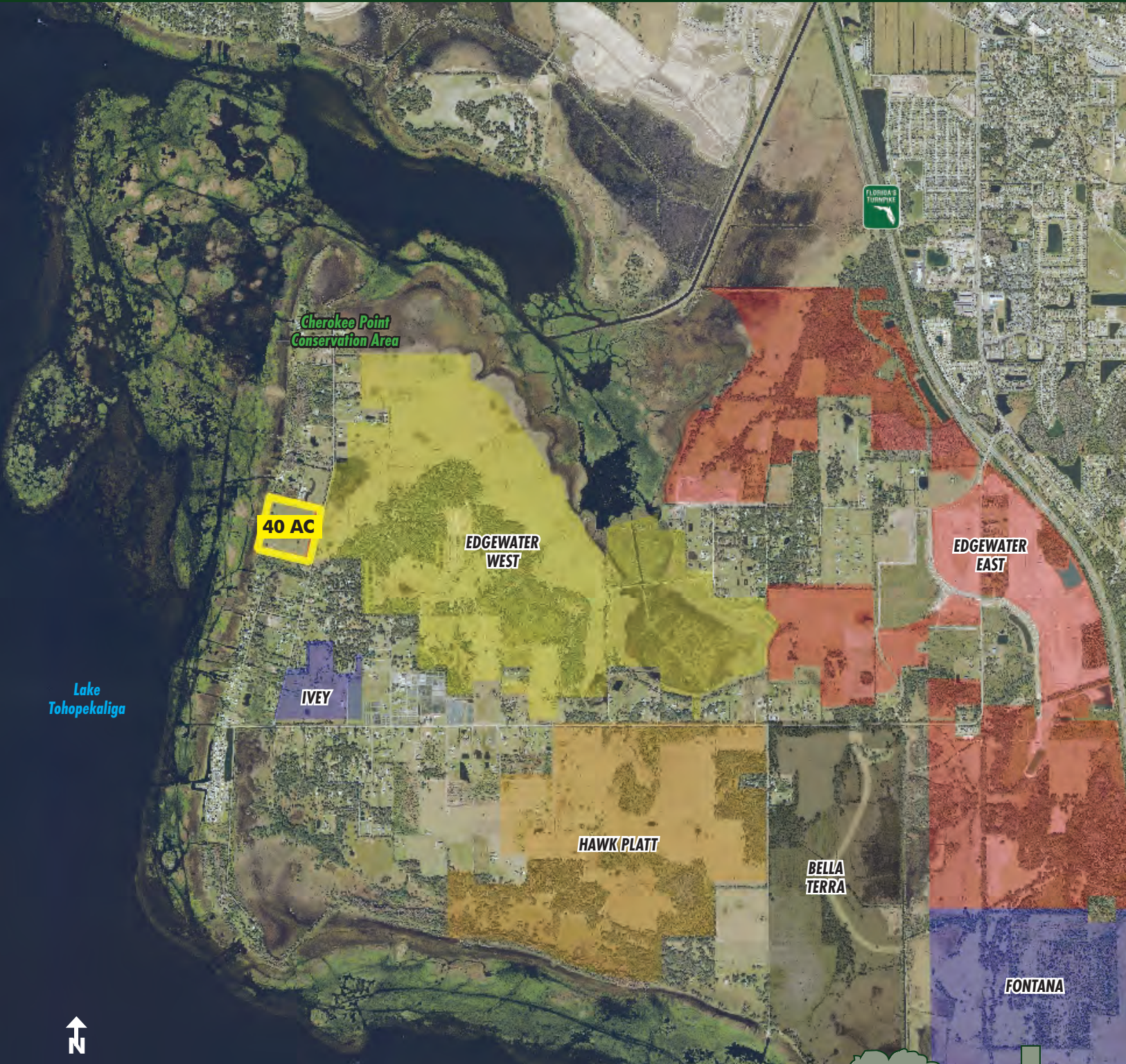
Offering subject to errors, omission, prior sale or withdrawal without notice.



**FOR
SALE**

PRIME 40 ACRES ON LAKE TOHO

Cherokee Rd, St. Cloud, FL 32772



AREA DEVELOPMENT MAP

MAURY L. CARTER & ASSOCIATES, INC.

Licensed Real Estate Brokers | www.maurycarter.com | 407-422-3144

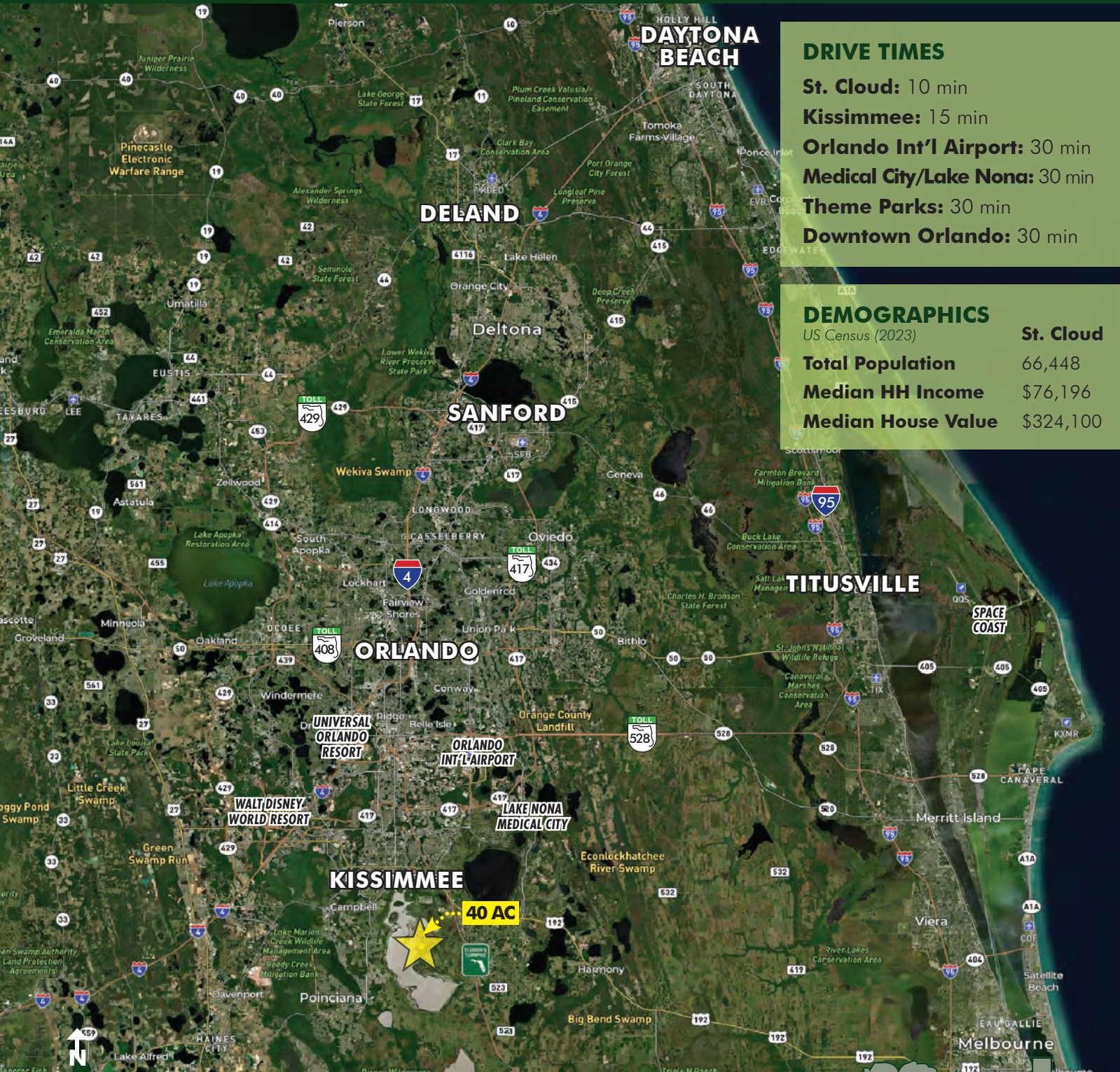
Offering subject to errors, omission, prior sale or withdrawal without notice.



**FOR
SALE**

PRIME 40 ACRES ON LAKE TOHO

Cherokee Rd, St. Cloud, FL 32772



DRIVE TIMES

St. Cloud: 10 min

Kissimmee: 15 min

Orlando Int'l Airport: 30 min

Medical City/Lake Nona: 30 min

Theme Parks: 30 min

Downtown Orlando: 30 min

DEMOGRAPHICS

US Census (2023)

St. Cloud

Total Population

66,448

Median HH Income

\$76,196

Median House Value

\$324,100

LOCATION MAP

MAURY L. CARTER & ASSOCIATES, INC.

Licensed Real Estate Brokers | www.maurycarter.com | 407-422-3144

Offering subject to errors, omission, prior sale or withdrawal without notice.

